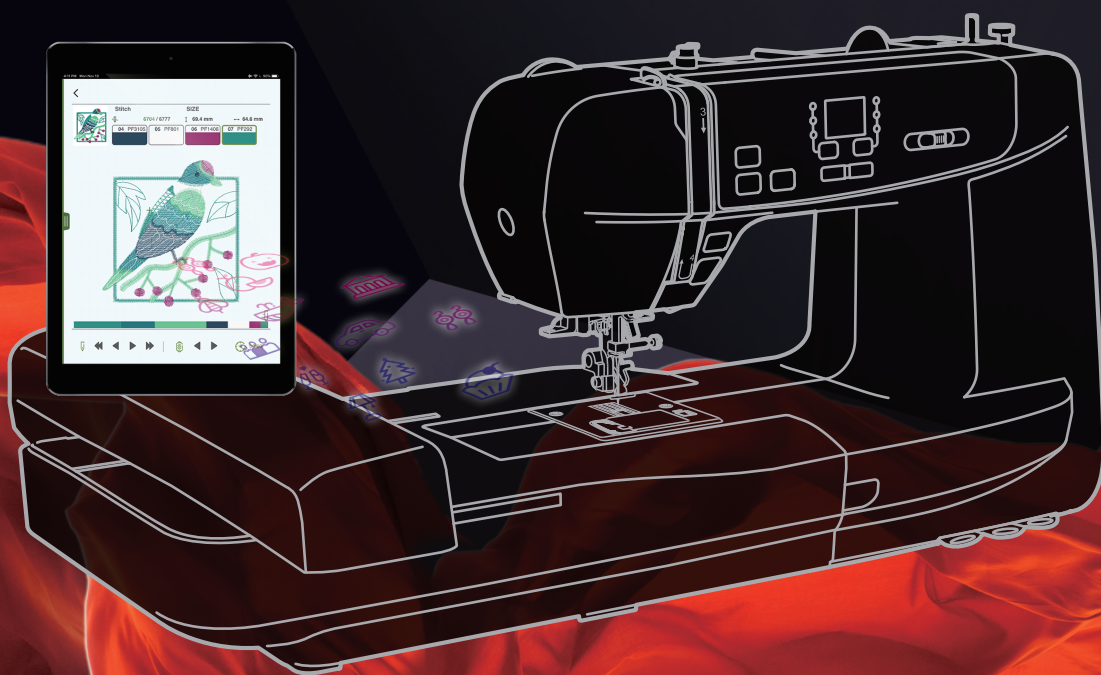


Instruction Manual

SEWING+WIFI EMBROIDERY COMBO

ALFA DUO



Download EZ Design software, manual and tutorial videos through the website:
<https://ezsupport.info/guide/cha05.php>



MyPatterns



Important safety instructions

When using an electrical appliance, basic safety should always be followed, including the following:

Read all instructions before using this sewing machine.

DANGER - To reduce the risk of electric shock:

1. An appliance should never be left unattended when plugged in.
2. Always unplug this appliance from the electric outlet immediately after using and before cleaning.

WARNING - To reduce the risk of burns, fire, electric shock, or injury to persons:

1. Read the instruction carefully before you use the machine.
2. Keep the instructions at a suitable place close to the machine and hand it over if you give the machine to a third party.
3. Use the machine only in dry locations.
4. Never leave the machine unattended with children or elderly people due to they may not be able to estimate the risk.
5. This appliance can be used by children aged from 8 years and above and persons with reduced physical, sensory or mental capabilities or lack of experience and knowledge if they have been given supervision or instruction concerning use of the appliance in a safe way and understand the hazards involved.
6. Children shall not play with the appliance.
7. Cleaning and user maintenance shall not be made by children without supervision.
8. Always switch off the machine if you carry out preparation for work (change the needle, feed the yarn through the machine, change the footer, etc.).
9. Always unplug the machine if you leave it unattended, to avoid injury by expediently switch on the machine.
10. Always unplug the machine if you changing the lamp or carry out maintenance (oiling, cleaning).
11. Don't use the machine if it's wet or in humid environment.
12. Never pull at the cord, always unplug the machine by gripping the plug.
13. If the LED lamp is damaged or broken, it must be replaced by the manufacturer or its service agent or a similarly qualified person, in order to avoid a hazard.

14. Never place anything on the pedal.
15. Never use the machine if the air vents are blocked, keep the air vents of the machine and the foot pedal free from dust, fusel and leftovers.
16. The machine must only be used with designated foot controller, in order to avoid a hazard. If the foot controller is damaged or broken, it must be replaced by the manufacturer or its service agent or a similarly qualified person.
17. The sound pressure level at normal operation is smaller than 75dB(A).
18. Do not dispose of electrical appliances as unsorted municipal waste, use separate collection facilities.
19. Contact your local government for information regarding the collection systems available.
20. If electrical appliances are disposed of in landfills or dumps, hazardous substances can leak into the groundwater and get into the food chain, damaging your health and well-being.
21. When replacing old appliances with new ones, the retailer is legally obligated to take back your old appliance for disposal at least for free of charge.
22. The appliance is not to be used by persons (including children) with reduced physical, sensory or mental capabilities, or lack of experience and knowledge, unless they have been given supervision or instruction. (For outside Europe)
23. Children being supervised not to play with the appliance. (For outside Europe)

SAVE THESE INSTRUCTIONS

This sewing machine is intended for household use only.

Be sure to use the sewing machine in the temperature range from 5°C to 40°C. If the temperature is excessively low, the machine can fail to operate normally.

Contents

Machine Introduction

Principal parts of the machine	2
Accessories	3
Connecting machine to power source.....	4
Display instruction.....	5

Machine Setup

Winding the bobbin	8
Inserting the bobbin	10
Threading the upper thread	11
Replacing the needle	14
Matching needle/fabric/thread	15
Changing the presser foot	16
Replacing the needle plate	17
To raise or drop the feed dogs	18
Adjusting the presser foot pressure.....	18
Thread tension	19

Instruction

Operation buttons.....	20
Selecting stitch	23
Altering the stitch length & width	24
Starting to sew	25

Embroidery Preparation

Embroidery quick guide.....	27
Embroidery unit overview.....	29
Embroidery hoop overview.....	30
Preparing the embroidery hoop.....	30
Preparation for embroidery	33
Starting the connection	35
Connection mode: Router.....	36
Connection mode: Point-to-point	38

Embroidery Pattern chart

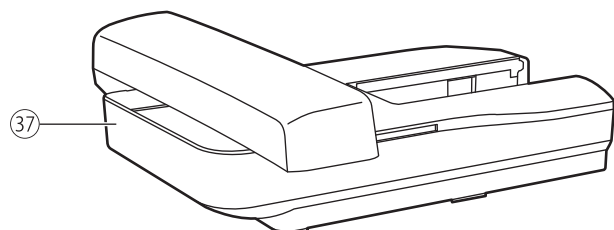
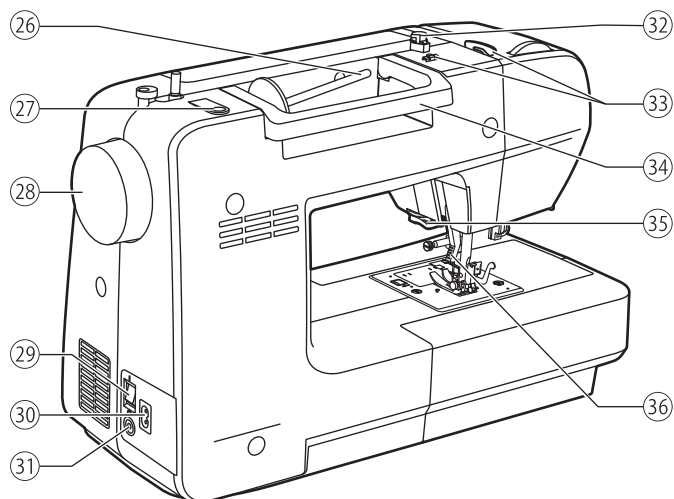
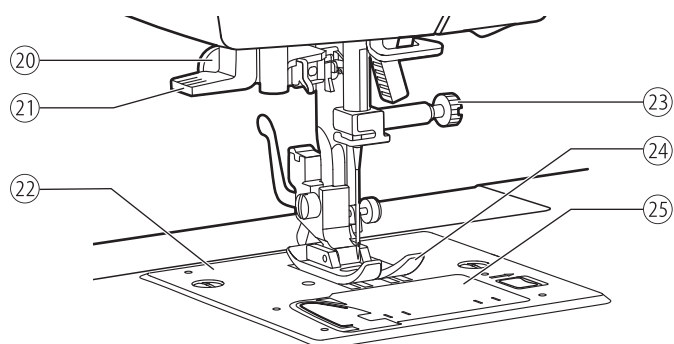
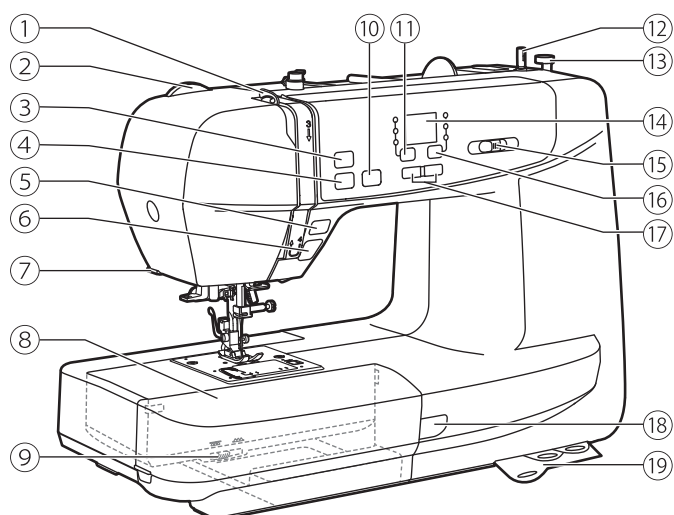
Embroidery pattern chart	39
Embroidery letter chart.....	42

Note

This manual includes basic machine introduction and operation instruction for sewing and embroidery function.

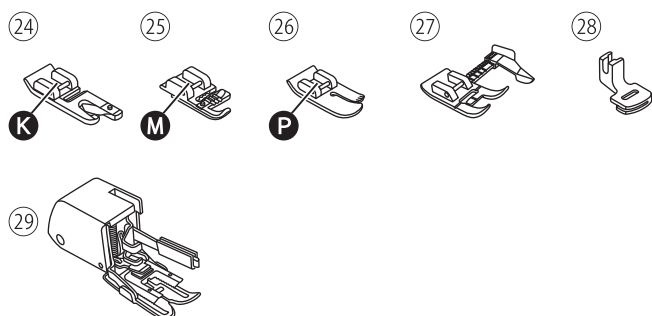
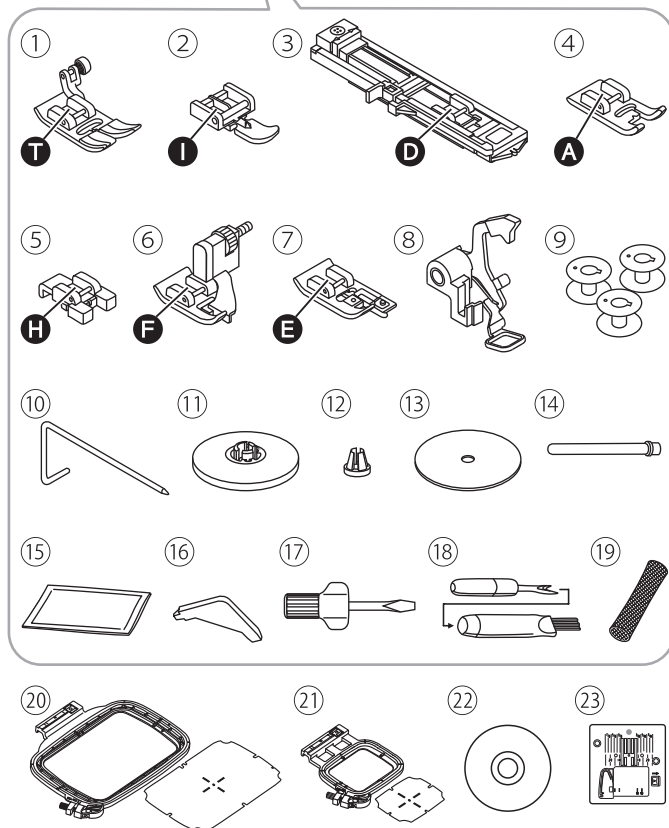
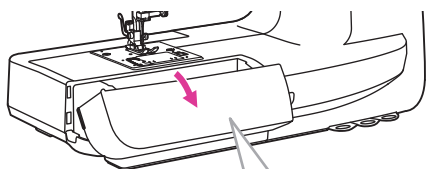
For more detailed sewing and embroidery guideline, please refer to PDF instruction file or operation Video in MyPatterns App.

Principal parts of the machine



- ① Take-up lever
- ② Presser foot pressure dial
- ③ Auto-lock button
- ④ Thread cutter button
- ⑤ Reverse button
- ⑥ Start/stop button
- ⑦ Thread cutter
- ⑧ Sewing table and accessory box
- ⑨ Drop feed lever
- ⑩ Needle up/down position button
- ⑪ Group switch button
- ⑫ Bobbin winder spindle
- ⑬ Bobbin winder stopper
- ⑭ Screen
- ⑮ Speed adjustment slider
- ⑯ Stitch adjustment button
- ⑰ Value setting buttons
- ⑱ Status indicator
- ⑲ Quick reference plate
- ⑳ Buttonhole lever
- ㉑ Needle threader
- ㉒ Needle plate
- ㉓ Needle clamp screw
- ㉔ Presser foot
- ㉕ Bobbin cover
- ㉖ Horizontal spool pin
- ㉗ Second spool pin hole
- ㉘ Handwheel
- ㉙ Main power switch
- ㉚ Power cord
- ㉛ Foot control connector
- ㉜ Bobbin thread guide
- ㉝ Upper thread guide
- ㉞ Handle
- ㉟ Thread cutter
- ㊱ Presser foot lifter
- ㊲ Embroidery unit

Accessories



Accessories are stored inside the accessory box.

❖ Standard

- ① All purpose foot
- ② Zipper foot
- ③ Buttonhole foot
- ④ Satin stitch foot
- ⑤ Button sewing foot
- ⑥ Blind hem foot
- ⑦ Overcasting foot
- ⑧ Darning/embroidery foot
- ⑨ Bobbin (3x)
- ⑩ Edge/quilting guide
- ⑪ Spool holder (Large)
- ⑫ Spool holder (Small)
- ⑬ Spool pin felt
- ⑭ Second spool pin
- ⑮ Pack of needles
- ⑯ L-screwdriver
- ⑰ Screwdriver
- ⑱ Seam ripper/brush
- ⑲ Thread net
- ⑳ Embroidery set (120*180mm)
- ㉑ Embroidery set (50*70mm)
- ㉒ CD
- ㉓ Straight stitch plate

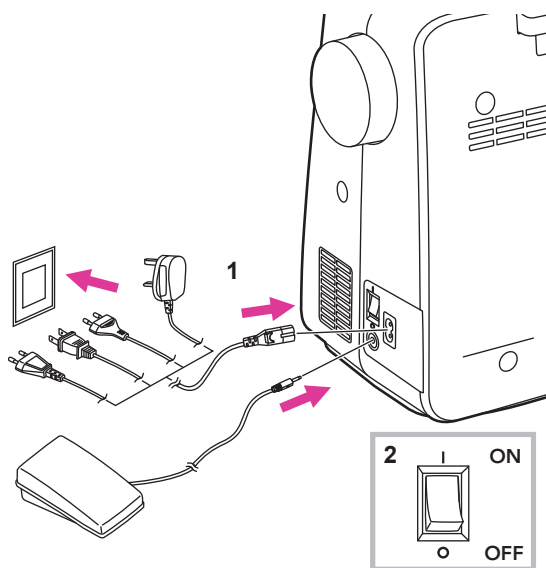
❖ Optional

- ⑳ Hemmer foot
- ㉑ Cording foot
- ㉒ Quilting foot
- ㉓ Adjustable guide foot
- ㉔ Gathering foot
- ㉕ Walking foot

Note

To purchase optional accessories, please consult your local dealer for further information.

Connecting machine to power source



⚠ Attention

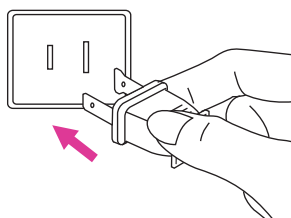
Always make sure that the machine is unplugged from power source and the main switch is off ("O"), when the machine is not in use and before inserting or removing parts.

Before connecting the power supply, make sure that the voltage shown on the rating plate is conforming with your main power.

Put the machine on a stable table.

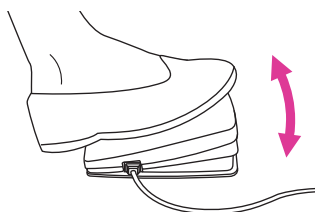
1. Connect the machine to a power source as illustrated.
2. Turn the power switch to on ("I").

The sewing lamp will light up when the switch is turned on.



❖ Polarized plug information

This appliance has a polarized plug (one blade is wider than the other), to reduce the risk of electrical shock; this plug will fit in a polarized outlet only one way. If the plug does not fit fully in the outlet, reverse the plug. If it still does not fit, contact a qualified electrician to install the proper outlet. Do not modify the plug in any way.



❖ Foot control (In sewing mode)

When the machine is off, insert the foot control plug into its connector on the machine.

Turn on the machine, and then slowly press down the foot control to start sewing. Release the foot control to stop the machine.

User can quickly kick one step on the foot control to change the needle position and set the stop position at the same time.

⚠ Attention

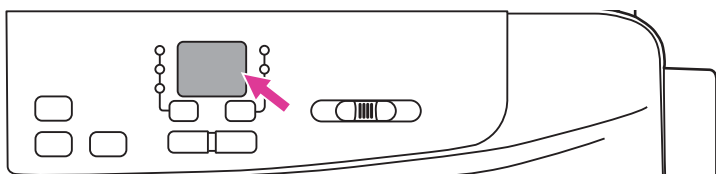
Foot control will be disabled in embroidery mode.

Note





Consult a qualified electrician if in doubt as to connect the machine to the power source.

Display instruction


❖ Screen











Operation mode

Screen	In general	Page
	Winding the bobbin Bobbin winder spindle is on the right for bobbin winding. Push the spindle to the left for sewing. Please refer to "Winding the bobbin" chapter for more information.	7-9
Screen	Embroidery mode	Page
	Router mode (AP) starting Under this mode, the machine connects with the mobile device thru the router. Once the setting was done, the machine will connect with the router automatically next time. Please refer to "Starting the connection" "Connection mode: Router" chapter for more information.	34-36
	Point-to-point mode starting Under this mode, the machine connects with the mobile device directly, and the internet access is not available for the mobile device during the connection. Please use this mode when the wifi service is not available or its quality is not well. Please refer to "Starting the connection" "Connection mode: Point-to-point" chapter for more information.	34,37
	Machine connected with tablet devices Please refer to "Starting the connection" "Connection mode: Router" "Connection mode: Point-to-point" chapter for more information.	34-37

Error messages

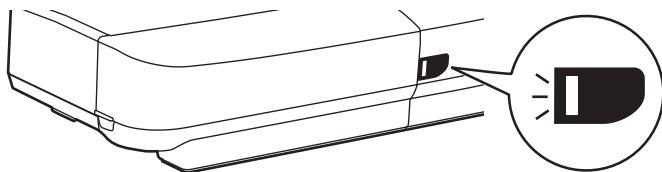
Screen	In general	Page
	Upper thread error The upper thread is broken or running out soon. Please change and re-threading the upper thread. Please refer to "Threading the upper thread" chapter for more information.	10-12

	Lower thread error The lower thread is broken or almost running out, please change and refill the lower thread. Please refer to "Winding the bobbin" and "Inserting the bobbin" chapters for more information.	7-9
	Motor overload protection The motor is overloaded due to the jammed threads or the fabrics are too thick to be penetrated.	**
	Presser foot lifter – wrong position Please check if the presser foot lifter is at the right position. To lower the lifter when sewing and raise it while the embroidery hoop is resetting.	**
	Buttonhole lever – wrong position Please check if the buttonhole lever is at the right position. To raise the lever in normal use and lower the lever while sewing buttonhole.	**
	Needle position – wrong position After installing the straight stitch plate, if the needle position is in a lower position, turn the handwheel backwards you to bring the needle to the highest position.	-
Screen	Embroidery mode	Page
	Embroidery hoop is not installed or should be removed	**
	Straight stitch plate is not installed Please refer to "Replacing the needle plate" chapter for more information	16
	The router cannot connect with the wifi. Please check the wifi service The connection failed because the router might not be in operation or the password is not correct. A.If it was the first time for setting, please check if the password is correct. B.If the router mode had already been set up successfully, please check if the router works normally and is well connected.	35

** Please refer to PDF instruction file or operation Video in MyPatterns App.

If the problem is still not solved, please contact your local dealer.

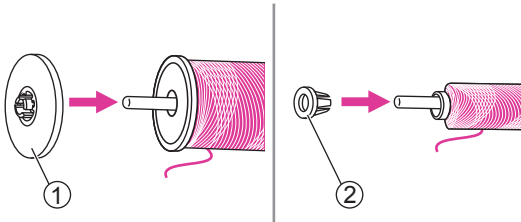
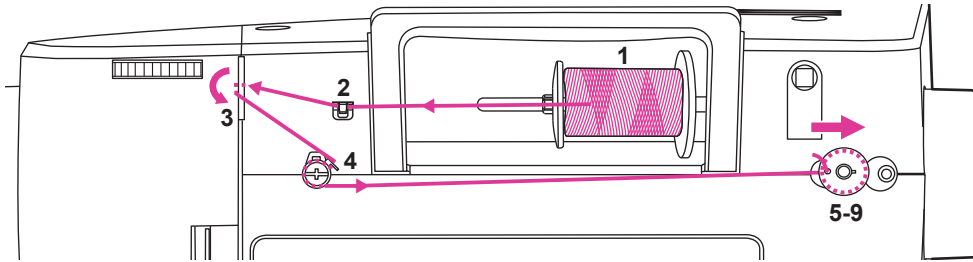
❖ Status Indicator



Display	In general	Sewing mode	Embroidery mode
Green	<p>When the upper thread breaks, the motor will stop. Green light will flash 3 times then back resume to constantly bright status.</p> <p>When remaining amount of bobbin thread is low, the motor will stop. Green light will flash 3 times then back resume to constantly bright status.</p>	Constantly bright: Machine is ready to sew; press the start/stop button to start sewing immediately.	Constantly bright: Machine is ready to embroider ; press the start/stop button to start embroidering immediately.
Yellow	-	Machine is not able to sew.	Machine is not able to sew.
Red	<p>Motor is overloaded or the shaft locked down.</p> <p>Once the problem solved, the lighting will resume to previous condition.</p>	-	-

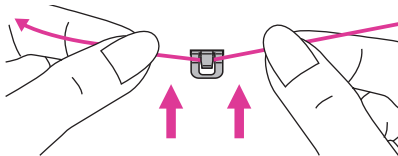
Winding the bobbin

Please following the number order and see the corresponding illustrations below.

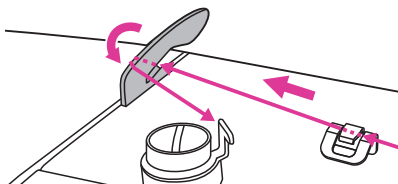


1. Place the thread and spool holder onto the spool pin. For better sewing quality, choose a proper size of the spool holder for the thread and attach it next to the spool.

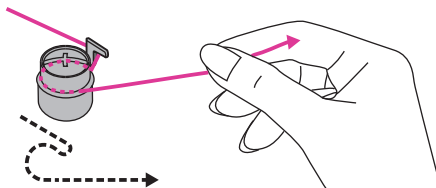
- ① Large spool holder
- ② Small spool holder



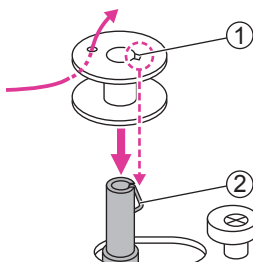
2. Draw the thread from the spool and place the thread in between the upper thread guide.



3. Guide the thread ahead and pull the thread through the pre-tension spring as illustrated.

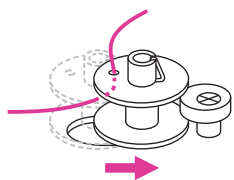


4. Wind the thread counter-clockwise around the tension discs.

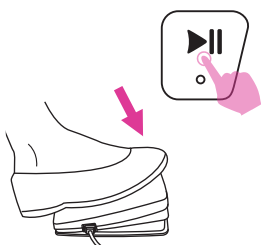
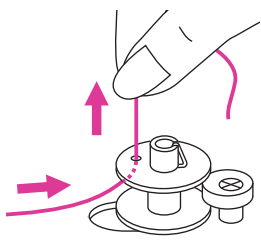


5. Place the thread end through one of the inner holes as illustrated and place the empty bobbin on the bobbin winder spindle. Then align the notch with bobbin winder spindle spring.

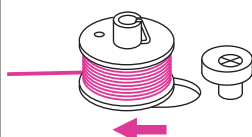
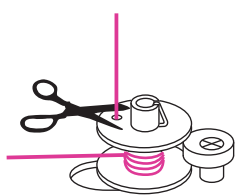
- ① Notch
- ② Bobbin winder spindle spring



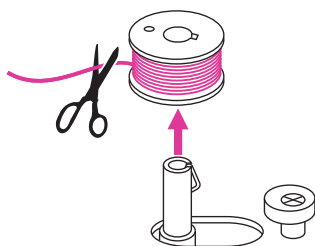
6. Push the bobbin to the right. When the bobbin winder spindle is pushed to the right, the screen will show "SP".



7. Hold the thread tail securely in one hand. Step on the foot control (only in the sewing mode) or long press the start/stop button to start winding the bobbin.



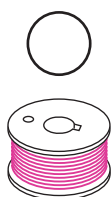
8. After the bobbin has wound a few rounds, stop the machine and cut the thread near the hole of the bobbin. Continue filling the bobbin until it is full. Once the bobbin is full, it rotates slowly. Release the foot control or press the start/stop button to stop the machine, then push the bobbin winder spindle to the left.



9. Cut the thread and then remove the bobbin.

Note

When the bobbin winder spindle is pushed to the right position, it's in "bobbin winding" mode and the machine is not allowed to sew and the handwheel will not be able to turn. To start sewing, push the bobbin winder spindle back to the left.



Note

Use a bobbin that has been correctly wound with thread, otherwise the needle may break or the thread tension will be incorrect.

Inserting the bobbin

⚠ Attention

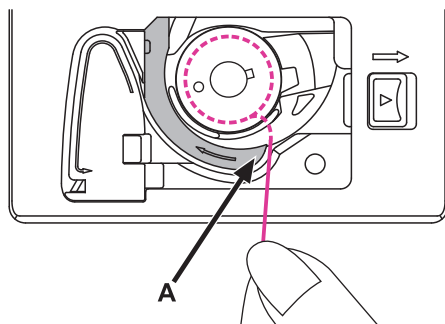
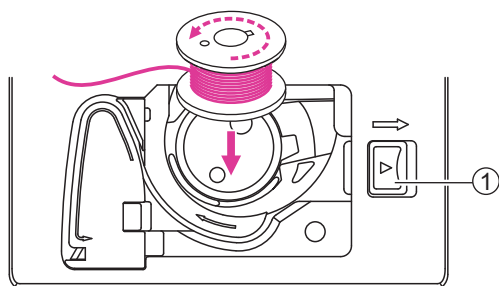
Turn the power switch to off ("O").

When inserting or removing the bobbin, the needle and the presser foot must be fully raised.

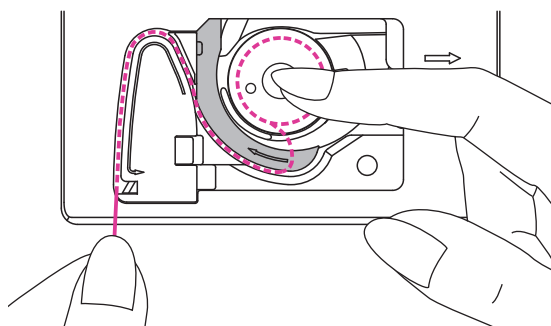
Open the bobbin cover by pushing the release button to the right.

① Release button

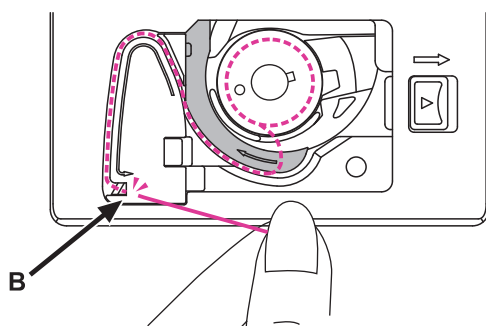
Insert the bobbin in the bobbin case with the thread running in a counter-clockwise direction (arrow).



Pull the thread through the slit (A).



With a finger hold gently on top of the bobbin, please follow the arrow markings and draw the thread into the bobbin thread guide.

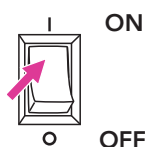
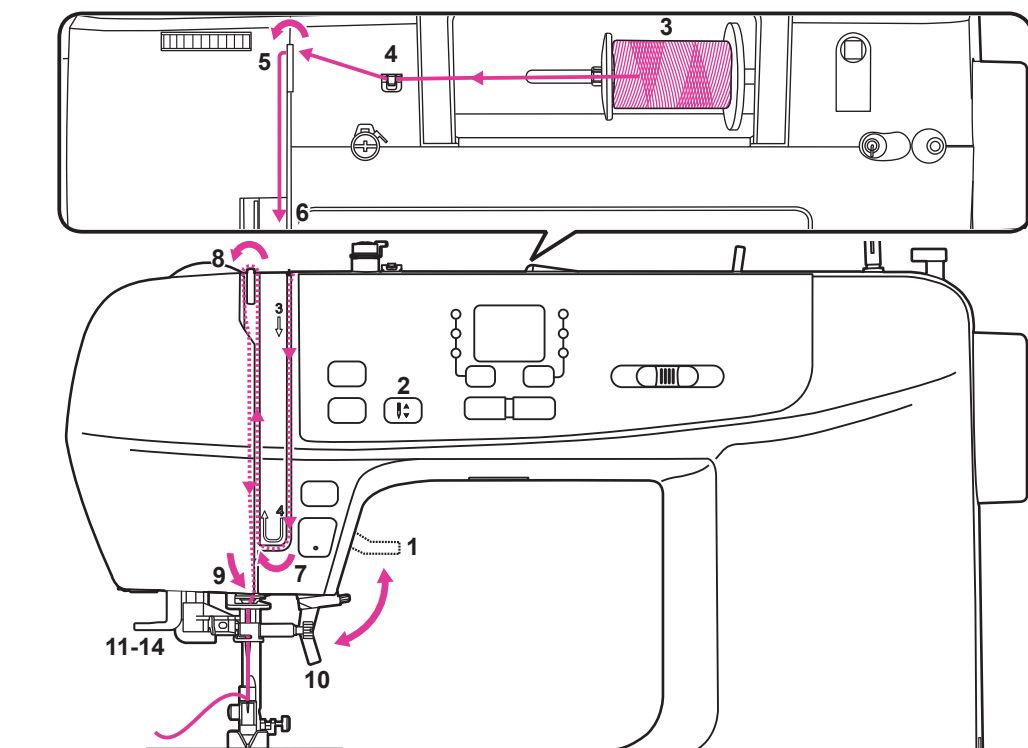


To cut off excessive thread, pull it to the cutter at point (B).

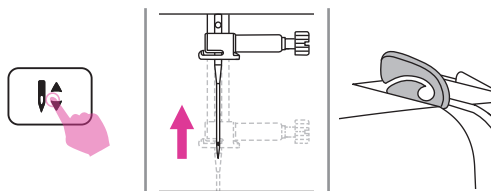
Close the bobbin cover.

Threading the upper thread

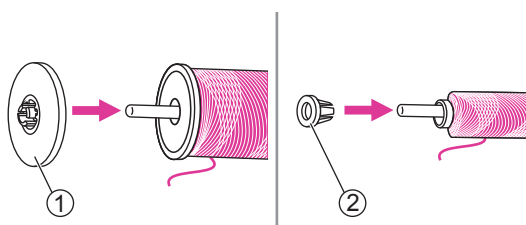
Please following the number order and see the corresponding illustrations below. It is important to carry out the threading correctly to get a quality sewing. Otherwise several problems will occur.



1. Turn the power switch to on ("I"). Raise the presser foot lifter.

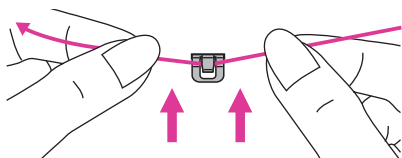


2. Press the needle up/down button to bring the needle and take-up lever to highest position.

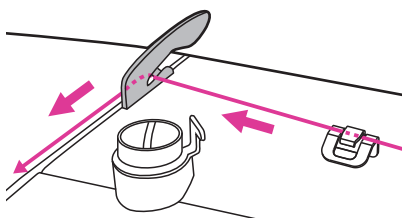


3. Place the thread and spool holder onto the spool pin. For better sewing quality, choose a proper size of the spool holder for the thread and attach it next to the thread.

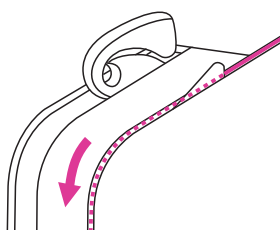
- ① Large spool holder
- ② Small spool holder



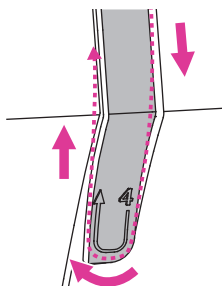
4. Draw the thread from the spool and place the thread in between the upper thread guide.



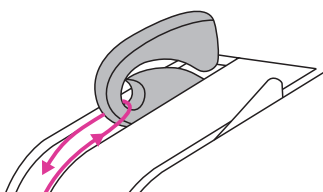
5. Guide the thread ahead and pull the thread through the pre-tension spring as illustrated.



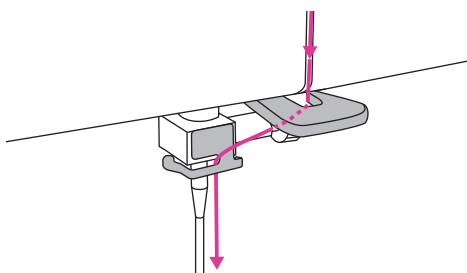
6. Continue to guide the thread into the silver discs to keep the thread in proper tension.



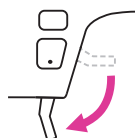
7. Pass the thread under the take-up spring then pull it upwards as arrow marks illustrated.



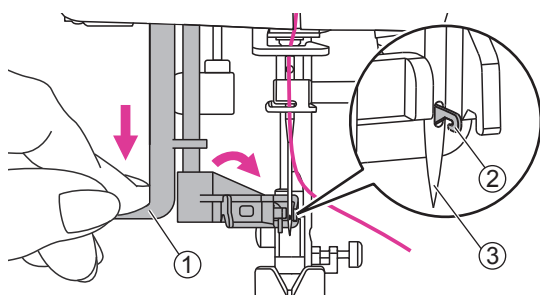
8. Pull the thread to the top then pass the thread through the slotted eye of the take-up lever. Guide the thread down afterwards.



9. Pass the thread behind the flat, horizontal thread guide. Use the needle threader to thread the needle.

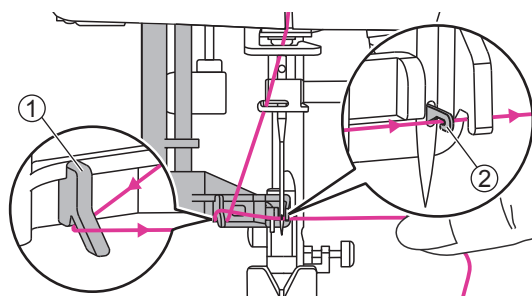


10. Lower the presser foot lifter.



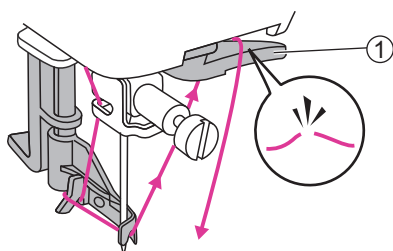
11. Pull down the lever to the very bottom. When heard a "click" sound, it will be on the right position to do the needle threading and the hook pin passes through the needle eye.

- ① Lever
- ② Hook pin
- ③ Needle



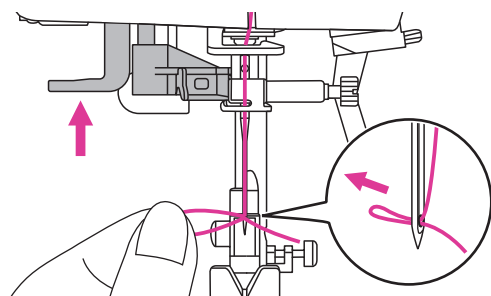
12. Pass the thread around the thread guide. Take the thread in front of the needle and make sure it is under the hook pin.

- ① Thread guide
- ② Hook pin



13. To cut the excess thread, take thread end and gently slip it over the thread cutter located on the right of the needle.

- ① Thread cutter



14. Raise the lever, the hook will rotate and pass the thread through the needle eye to form a loop.

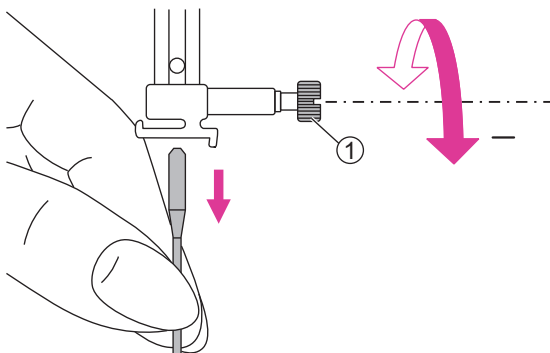
Pull the thread through the needle eye to finish threading.

Note

Your machine is threaded and ready for sewing, follow the instructions on "Starting to sew" chapter to start sewing.

Replacing the needle

Change the needle regularly, especially when it shows signs of wear or if it causes problems.

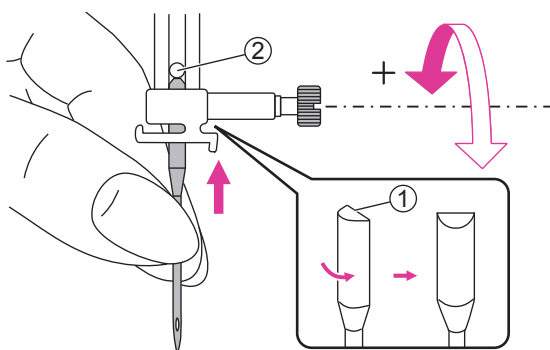


⚠ Attention

Turn the power switch to off ("O") when carrying out below operations!

Turn the handwheel toward you to raise the needle then loosen the needle clamp screw to remove the needle.

① Needle clamp screw

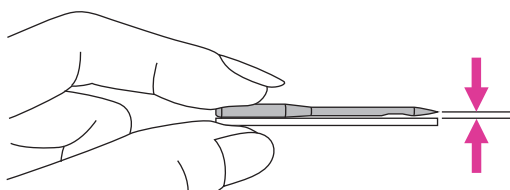


When inserting a new needle, keep the flat side of the shaft to the back.

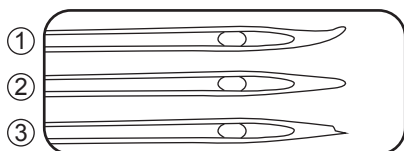
Push the needle into the clamp until it touches the pin and stops. Then secure it by tightening the needle clamp screw.

① Flat side of the shaft

② Pin



Needles must be in perfect condition.







Problems can occur with:

① Bent needles

② Blunt needles

③ Damaged points

Matching needle/fabric/thread

NEEDLE SIZE	FABRICS	THREAD
65/9 - 75/11 	Lightweight fabrics- thin cottons, voile, serge, silk, muslin, Qiana, interlocks, cotton knits, tricot, jerseys, crepes, woven polyester, shirt & blouse fabrics.	Light-duty thread in cotton, nylon, polyester or cotton wrapped polyester.
80/12 	Medium weight fabrics- cotton, satin, kettleclote, sailcloth, double knits, lightweight woolens.	Most threads sold are medium size and suitable for these fabrics and needle sizes. Use polyester threads on synthetic materials and cotton on natural woven fabrics for best results. Always use the same thread on top and bottom.
90/14 	Medium weight fabrics- cotton duck, woolen, heavier knits, terrycloth, denims.	
100/16 	Heavyweight fabrics- canvas, woolens, outdoor tent and quilted fabrics, denims, upholstery material (light to medium).	

Note

1. In general, fine threads and needles are used for sewing fine fabrics, thicker threads and needles are used for sewing heavy fabrics.
2. Always test thread and needle size on a small piece of fabric which will be used for actual sewing.
3. Use the same thread for needle and bobbin.
4. Use a stabilizer or place a backing for fine or stretchy fabrics, and select the correct presser foot.
5. It is recommended that a 90/14 needle should be used when embroidering on heavyweight fabrics or stabilizing products (for example, denim, puffy foam, etc.). A 75/11 needle may bend or break, which could result in injury.
6. For transparent nylon thread, always use needle 90/14 - 100/16. The same thread is usually used for the bobbin thread and upper threading.
7. For good quality embroidery designs, recommend to use a 75/11 needle when embroidering.

Changing the presser foot

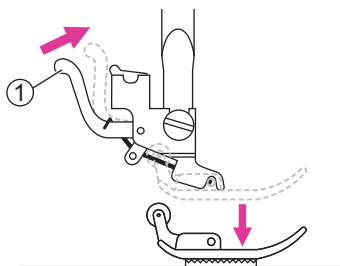
⚠ Attention

Turn the power switch to off ("O") when carrying out any of the operations below!

❖ Remove the presser foot

Raise the presser foot lifter. Press the back lever to release the presser foot.

- ① Lever

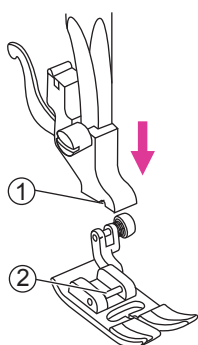


❖ Attach the presser foot

Lower the presser foot lifter until the cut-out meets the pin.

The presser foot will attach to the presser foot holder automatically.

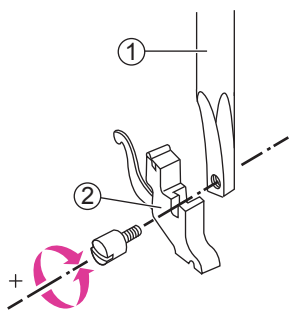
- ① Cut-out
② Pin



❖ Remove and insert the presser foot holder

Raise the presser foot lifter. Align the presser foot holder with the lower left side of the presser bar. Hold the presser foot holder, then tighten the screw using the enclosed screwdriver.

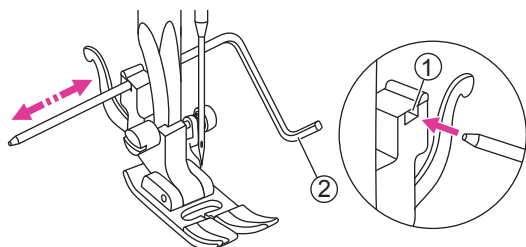
- ① Presser foot bar
② Presser foot holder



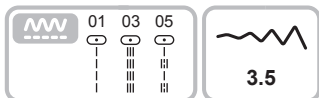
❖ Insert the edge/quilting guide

Insert the edge/quilting guide in the slot as illustrated. Adjust the needed width according to your sewing applications.

- ① Slot
② Edge/quilting guide



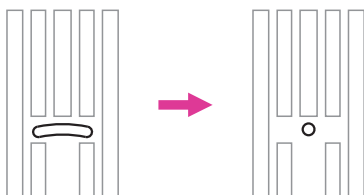
Replacing the needle plate



⚠ Attention

Turn the power switch to off ("O").

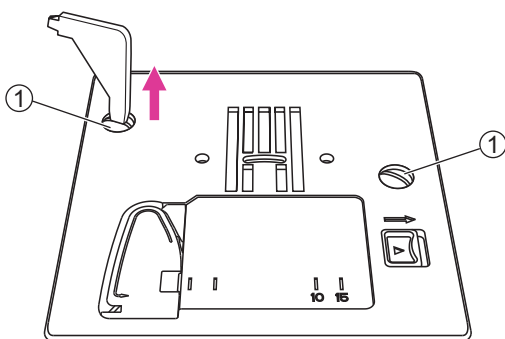
Only specific straight stitches are applicable while using straight stitch needle plate. (stitch pattern 01 & 03 & 05)



The straight stitch plate is recommended for embroidery mode for better embroidery quality. It can be also used for straight stitches in middle needle position in normal sewing mode.

The particular design of smaller central hole can give a better support of the fabric during straight stitch sewing.

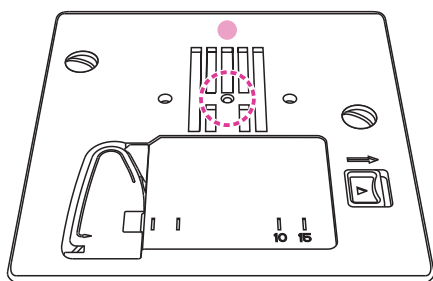
Thus, the fabric can be prevented from being pulled down into bobbin/hook area, especially in the beginning or end of a seam.



Remove the needle, presser foot and presser foot holder.

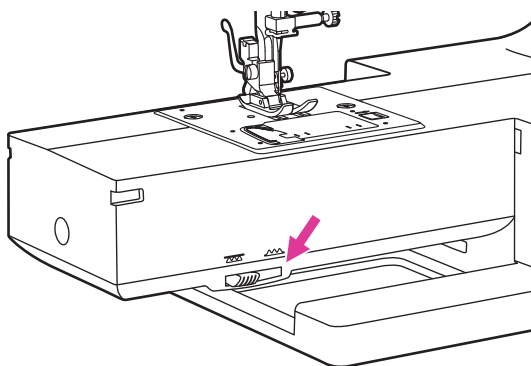
Remove the screws on the needle plate then remove the needle plate.

① Screws



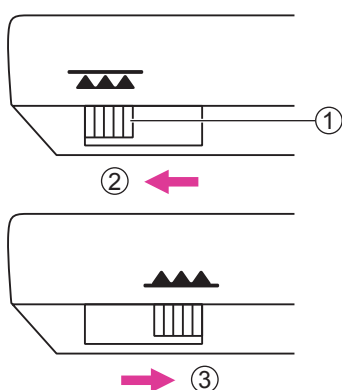
Change the straight stitch plate and tighten the screws.

To raise or drop the feed dogs



The drop feed lever can be seen on the base at the front side of the sewing machine.

Sliding the drop feed lever to lower or raise the feed dogs. When lever is in raised position, the feed dog will arise automatically when you are sewing.

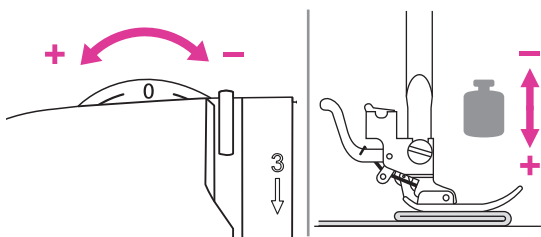


- ① Drop feed lever
- ② Lowered position
- ③ Raised position

Note

When you finish the work, (e.g. button sewing, free motion darning, embroidery and monogramming), please move the drop feed lever to raised position for general sewing purpose.

Adjusting the presser foot pressure



The presser foot pressure dial is on the top left of the face plate.

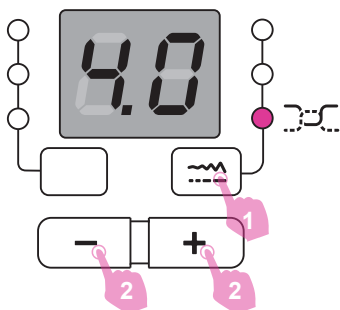
The presser foot pressure of the machine has been pre-set and requires no particular adjustment for general sewing.

Basic presser foot pressure setting: "0".

For sewing with very thin fabric, reduce the pressure by turning the knob clockwise (-1, -2, -3) and for heavy fabric, increase the pressure by turning it counter-clockwise (+1, +2).

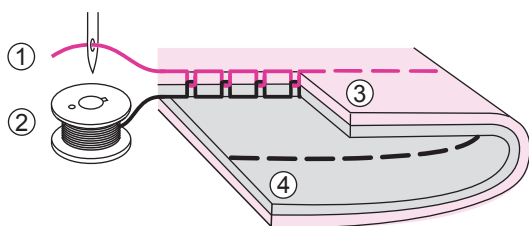
Thread tension

Proper tension setting is important for sewing. There is no single tension setting appropriate for all the stitch functions and fabrics.



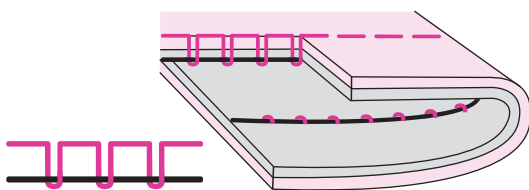
Basic thread tension setting: "4".

1. Press the stitch adjustment button to change to the thread tension mode.
2. When the tension light is on, the upper thread tension can be adjusted.

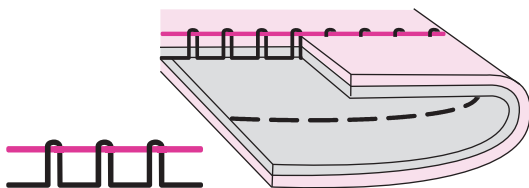


Normal thread tension for straight stitch sewing.

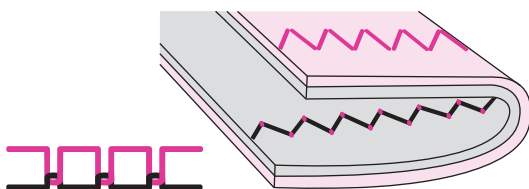
- ① Upper thread
- ② Bobbin thread
- ③ Surface
- ④ Wrong side



Thread tension is too loose for straight stitch sewing. To increase the tension, press the "+" button.



Thread tension is too tight for straight stitch sewing. To reduce the tension, press the "-" button.

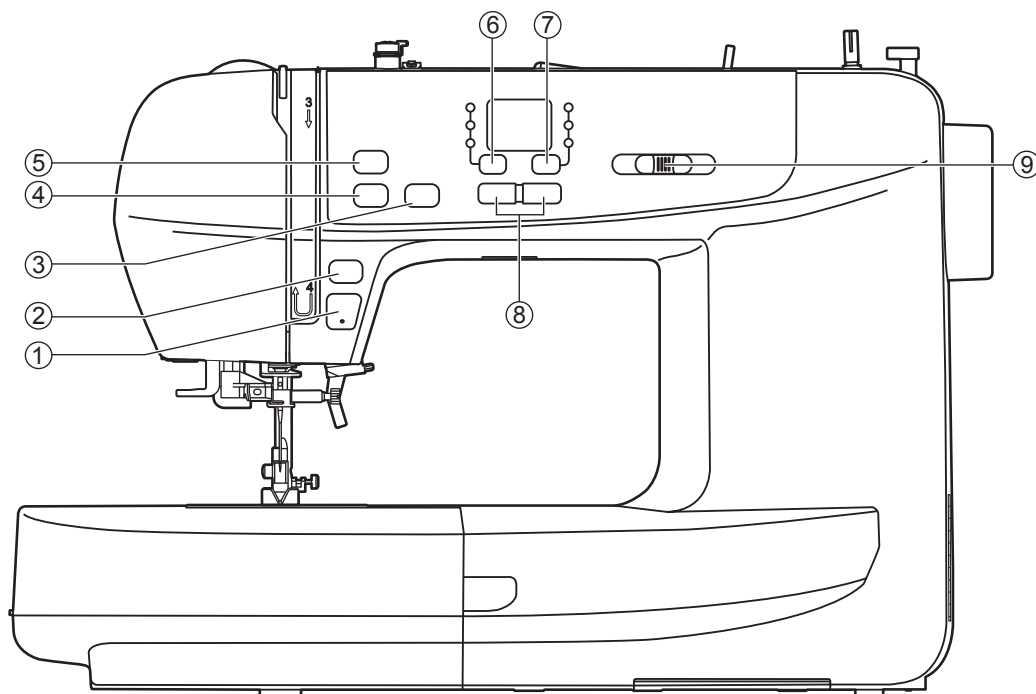


Normal thread tension for zig zag and decorative sewing.

For all decorative sewing you will always obtain a nicer stitch and less fabric puckering.

Correct thread tension is when a small number of the upper thread appears on the bottom side of fabric.

Operation buttons



1. Start/stop button

Long press the start/stop button to start machine running. Press the start/stop button again to stop machine. The machine rotates slowly at the beginning of the sewing.

The sewing speed can be controlled by the speed adjustment slider.

This way you may operate the machine without foot control.



2. Reverse button

When the A group patterns 01-06 are selected, the machine will sew reverse at a low speed if the reverse button is pressed. The machine will sew forward after the button is released.

When the A group patterns 07-19, 28-55 and B group patterns 01-65 are selected, the machine will immediately sew 3 locking stitches when the reverse button is pressed, then automatically stop.



3. Needle up/down position button

In sewing mode, with the needle up/down position button, you decide whether the needle stops in the highest or in the lowest position (i.e. in the fabric) when you stop sewing.

Note

During sewing, press the needle up/down button, the machine will stop automatically.



4. Tread cutter button

Press this button after finishing sewing and the machine will trim the thread.



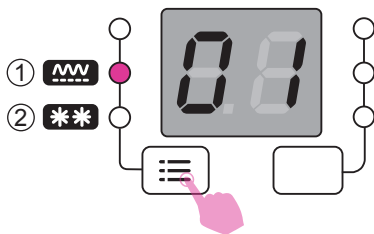
5. Auto-lock button

When machine is not sewing: Press the auto lock button, machine will sew 3 stitches in the same position then stop.

During machine is sewing: When A group patterns 01-06 are selected and the auto-lock button is pressed, the machine will sew 3 locking stitches. Then it will stop automatically.

During machine is sewing: When A group patterns 07-19, 28-55 and B group patterns 01-65 are selected and the auto-lock button is pressed, the machine will sew 3 locking stitches at the end of the current pattern. Then it will stop automatically. The function will be cancelled if you press the button once again or select another pattern.

In embroidery mode, press this button to move the embroidery carriage to left side, and it will be easier for you to change the thread. Press the button again, the embroidery carriage will be back to the original position.

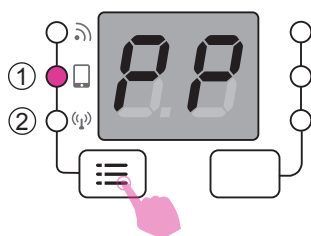


6. Group switch button (In sewing mode)

Press the group switch button to change to the A group patterns or B group patterns mode.

- ① A group patterns
- ② B group patterns

For details, refer to "stitch chart".



6.1 Connection mode switch button (In embroidery mode)

Press the connection mode switch button to change to the point-to point mode or router mode.

- ① Point-to point mode (PP)
- ② Router mode (AP)



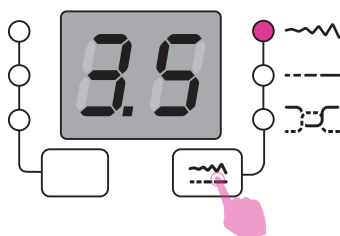
6.2 Sound button

Buzzer turn off:

In sewing mode, press the sound button for 2 seconds and when you hear the machine delivering a short beep, the sound will be turned off.

Buzzer turn on:

In sewing mode, when machine is in silent mode, press the button for 2 seconds and it will deliver two short beeps to remind you that the sound is turned on now.



7. Stitch adjustment button

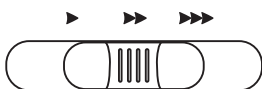
In sewing mode, press the stitch adjustment button to change to the stitch length, stitch width or thread tension mode.

In embroidery mode, press the stitch adjustment button, when the tension light is on, the embroidery thread tension can be adjusted.



8. Value setting buttons

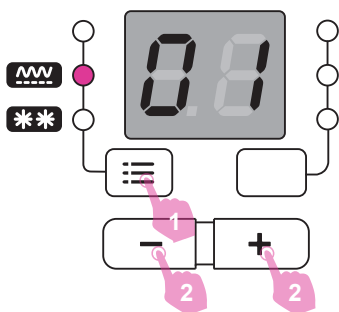
The +/- button can modify the values for sewing. (stitch number/ stitch length/ stitch width/ thread tension)



9. Speed adjustment slider

The speed adjustment slider can control the sewing speed. To increase the speed, slide the lever to the right. To decrease the sewing speed, slide the lever to the left.

Selecting stitch

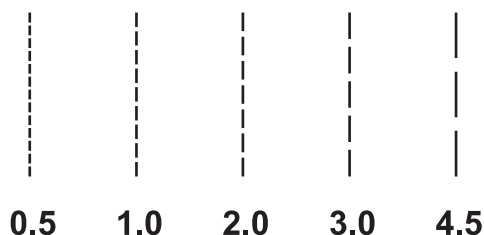
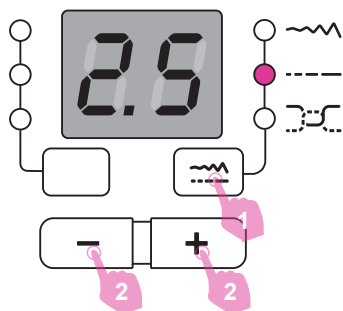


Select the desired stitch from those shown on the stitch pattern plate.

1. Press the group switch button to change to the A group patterns or B group patterns mode.
2. When the group pattern light is on, the +/- buttons can be used to select the pattern number needed; press the "+" button to select the next pattern number and press the "-" button to select the previous pattern number.

When the +/- button is pressed and held down, the numbers will change continuously for quick selection.

Altering the stitch length & width

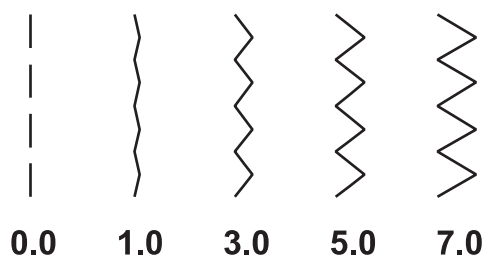
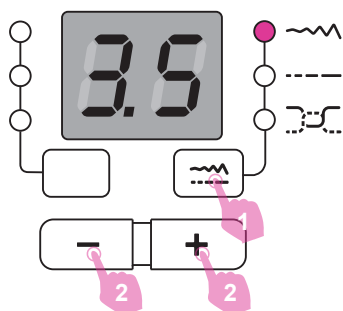


❖ Altering the stitch length

When you select a stitch, the machine will automatically set the recommended stitch length values which will be shown on the LED screen.

1. Press the stitch adjustment button to change to the stitch length mode.
2. For a shorter stitch length, press the "-" button. For a longer stitch length, press the "+" button.

Different stitches will have different length limitation. When the number is set back at its default value, the screen will blink.



❖ Altering the stitch width

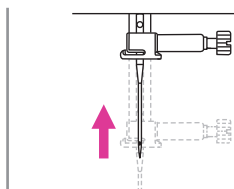
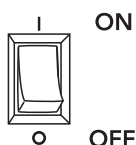
When you select a stitch, the machine will automatically set the recommended stitch width values which will be shown on the LED screen.

1. Press the stitch adjustment button to change to the stitch width mode.
2. For a narrower stitch, press the "-" button. For a wider stitch, press the "+" button.

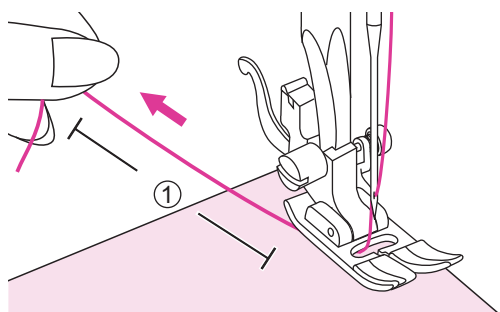
Different stitches will have different width limitation. When the number is set back at its default value, the screen will blink.

Starting to sew

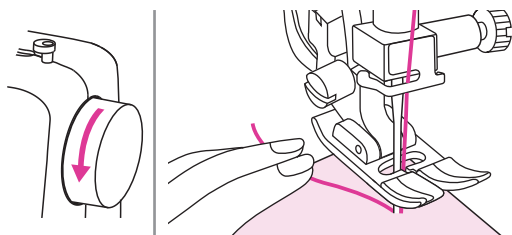
Make sure you follow the needle/fabric/thread combinations and use the suggested presser foot before sewing.



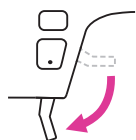
1. Turn the power switch to on ("I").
2. Press the needle up/down button to bring the needle to highest position.
3. Raise the presser foot lifter. Select a stitch.



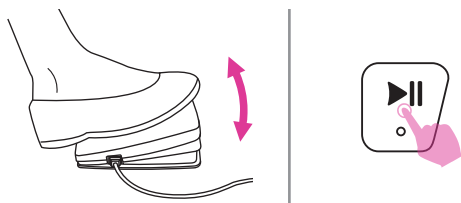
4. Place the fabric under the presser foot, pass the thread under the presser foot, and then pull out about 10cm of thread toward the rear of the machine.
① 10cm



5. Turn the handwheel toward you (counter-clockwise) to lower the needle into the fabric at the beginning of the stitching.



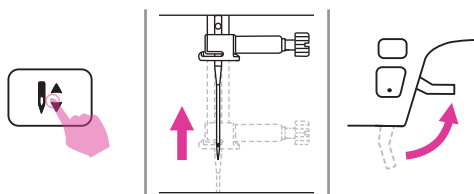
6. Lower the presser foot lifter.



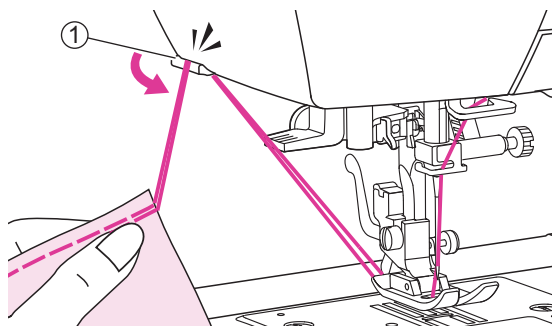
7. Slowly press down the foot control or press the start/stop button to start sewing. Release the foot control or press the start/stop button again to stop the machine.

Note

You can use reverse sewing for back tacking and reinforcing seams by pressing the reverse button. Please refer to "Useful skills" chapter for more information.



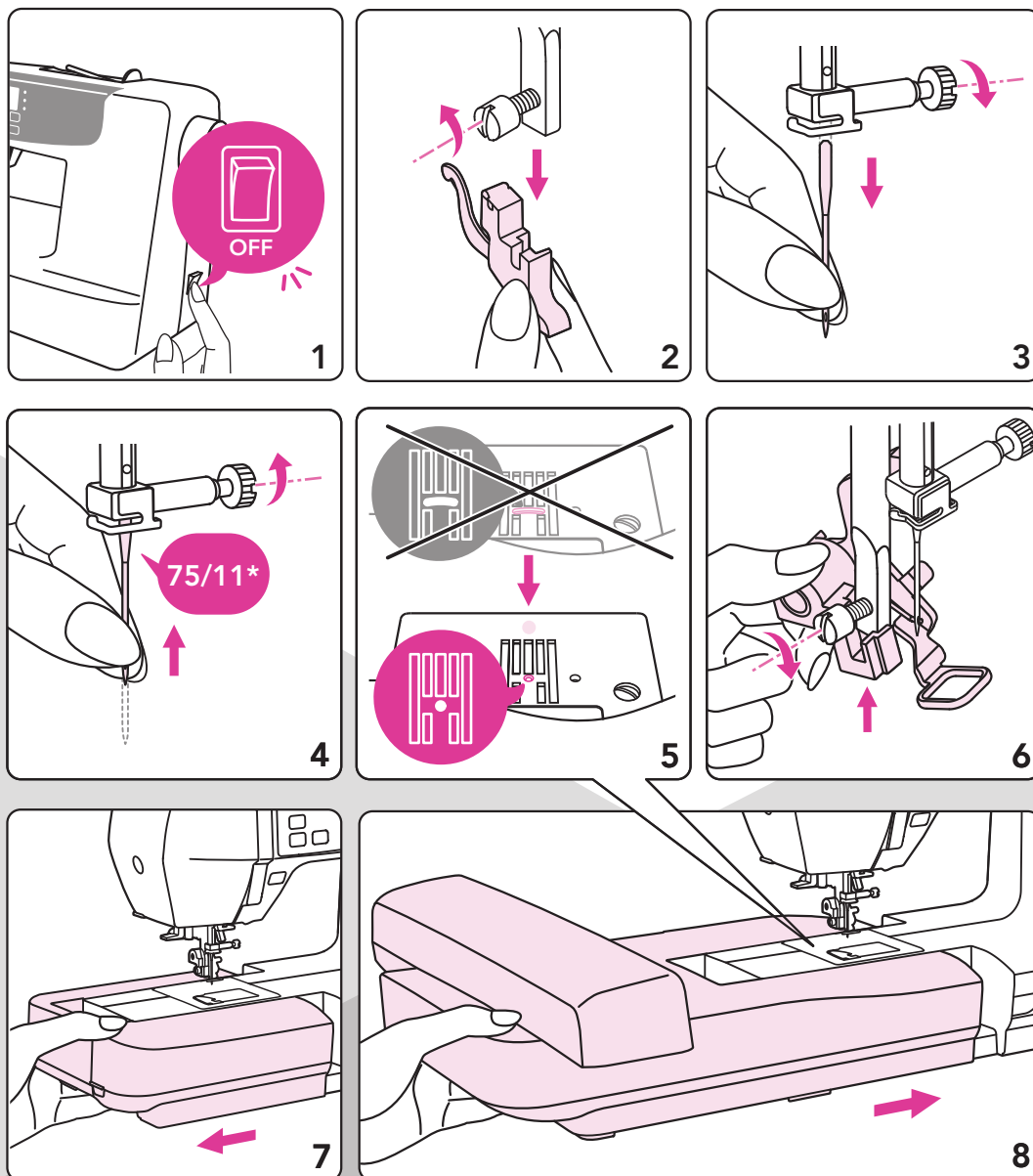
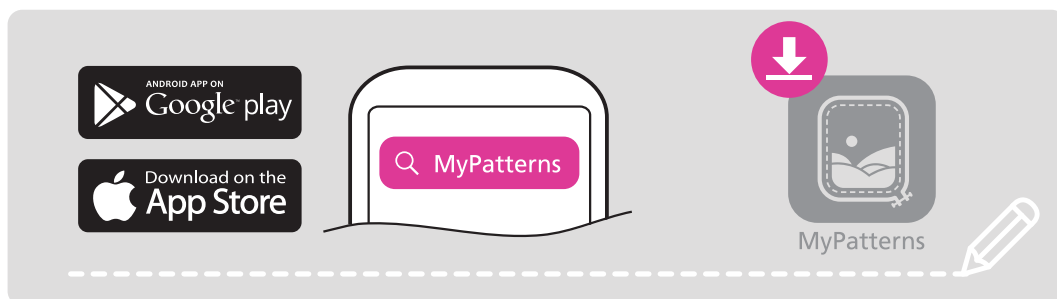
8. Press the needle up/down button to raise the needle. Raise the presser foot lifter and remove the fabric.



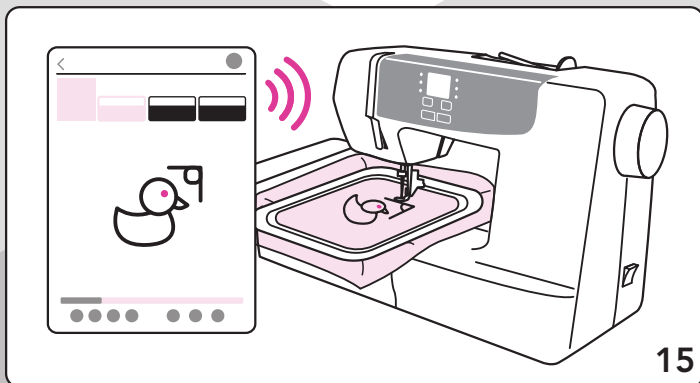
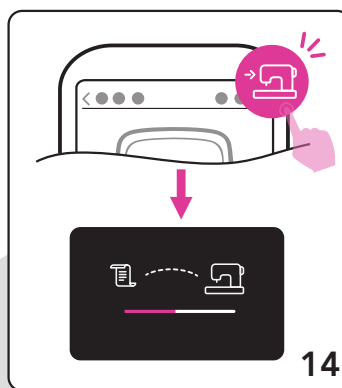
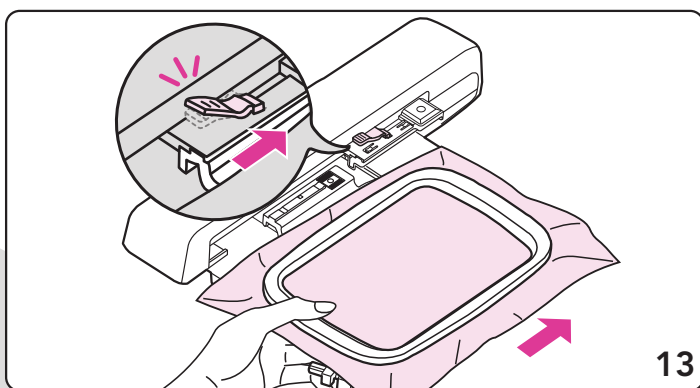
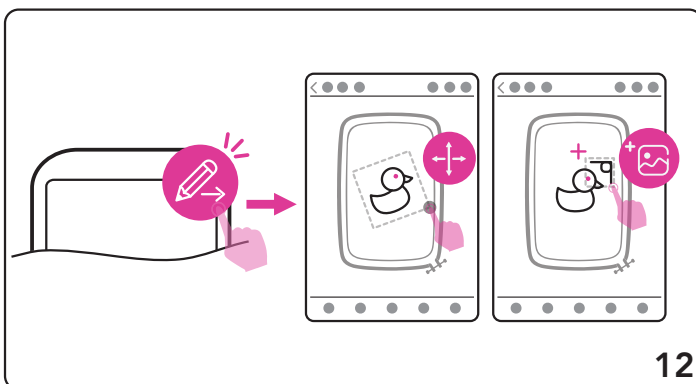
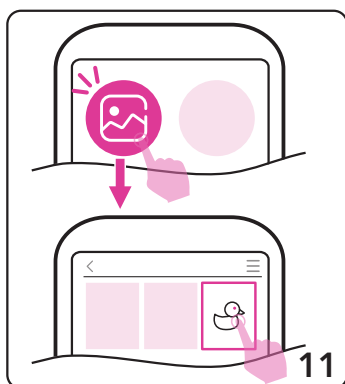
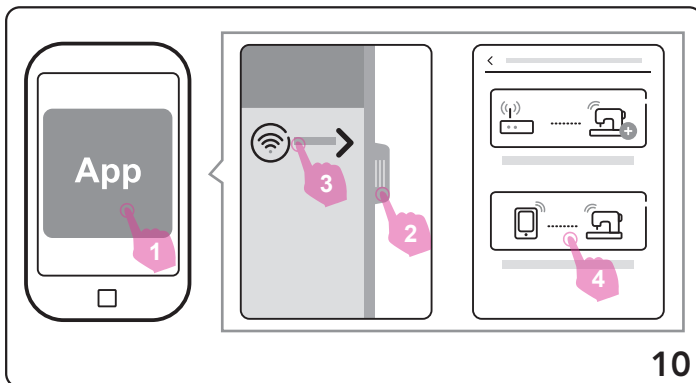
9. Guide both threads to the side of the face plate and into the thread cutter to cut them.

① Thread cutter

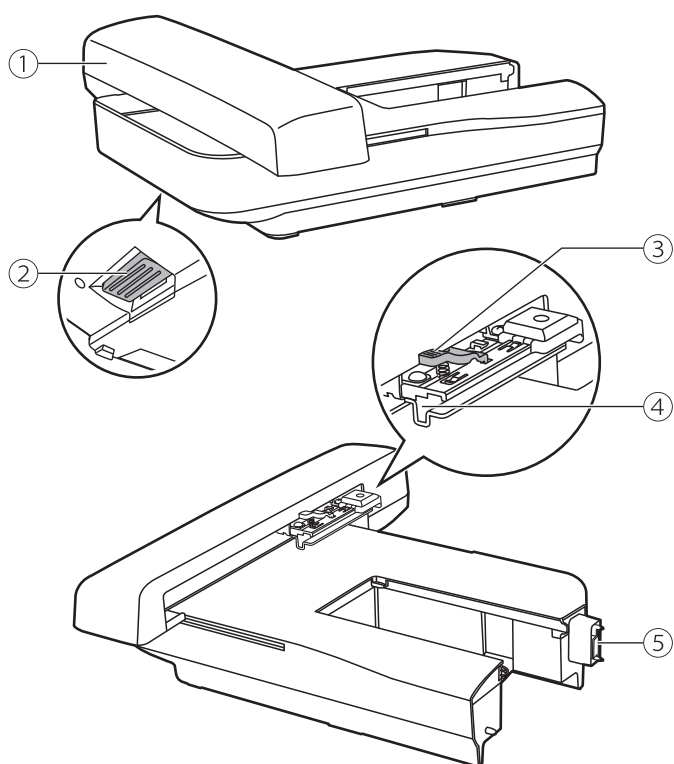
Embroidery quick guide



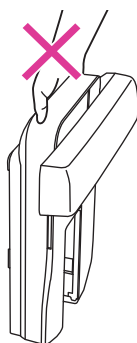
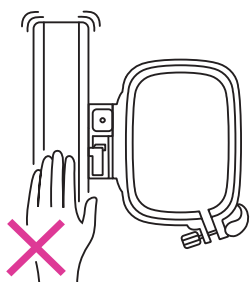
* Please refer to page "Matching needle/fabric/thread" and "Replacing the needle" for more information.



Embroidery unit overview



- ① Embroidery carriage
- ② Embroidery unit release button
- ③ Hoop-securing lever
- ④ Embroidery hoop holder
- ⑤ Embroidery unit detection device



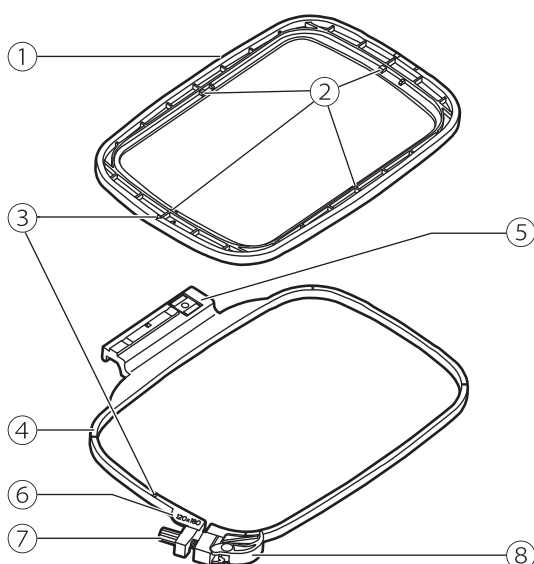
Note

Do not touch the embroidery unit detection device. The connector could be damaged, and it may cause malfunctions.

Do not press or force on embroidery carriage, and do not lift it up. It may cause malfunctions.

Do not carry the embroidery unit by holding the release button compartment.

Embroidery hoop overview



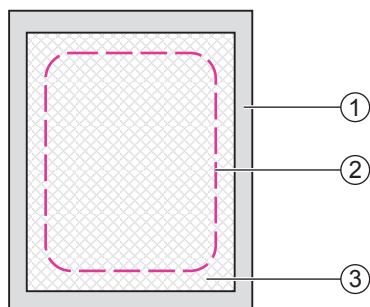
- ① Inner hoop
- ② Center marks
- ③ Triangular mark
- ④ Outer hoop
- ⑤ Embroidery hoop connector
- ⑥ Hoop size marks
- ⑦ Fastening screw
- ⑧ Quick release device

Preparing the embroidery hoop

❖ Attaching a stabilizer to the fabric

⚠ Attention

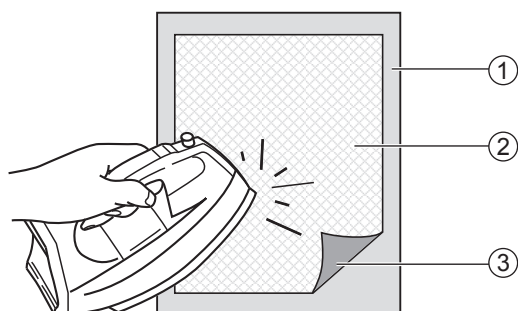
Always use stabilizer material when embroidery. The needle may break or bend without using stabilizer material for thin fabrics or stretch fabrics in embroidering works. Furthermore, the pattern may not be sewn perfectly.



To obtain the best embroidery performance, it is important to use stabilizers.

Prepare stabilizer material that is larger than the embroidery hoop being used.

- ① Wrong side
- ② Size of embroidery hoop
- ③ Stabilizer



If you are using adhesive stabilizers, place the adhesive surface of the stabilizer material against the wrong side of the fabric, and iron.

- ① Wrong side
- ② Stabilizer
- ③ Adhesive surface

❖ Hooping the fabric

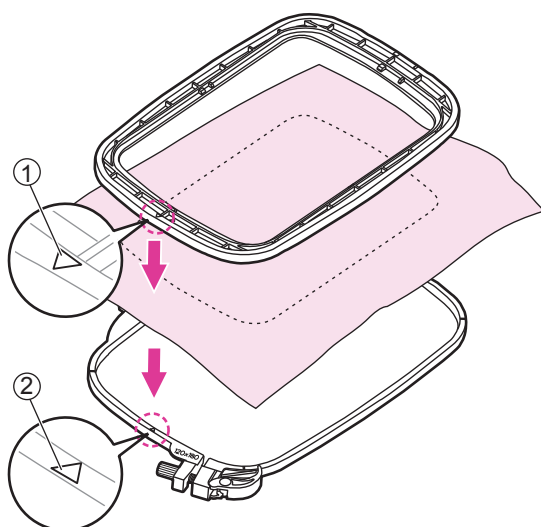
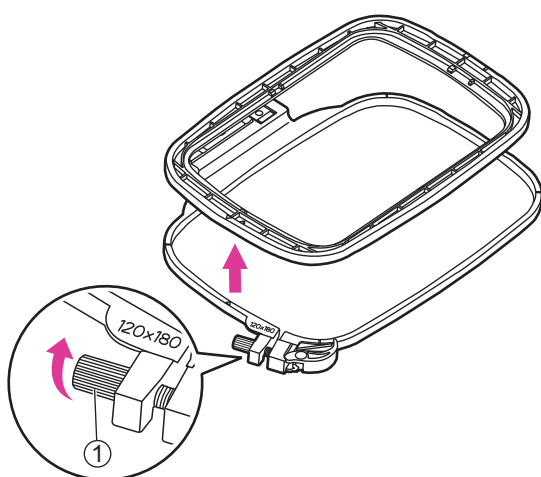
⚠ Attention

Thick layers of fabric and stabilizer may cause skipped stitches, or broken threads, needles and damage on embroidery hoops.

Loosen the fastening screw under the outer hoop.

Separate the inner hoop and outer hoop.

- ① Fastening screw

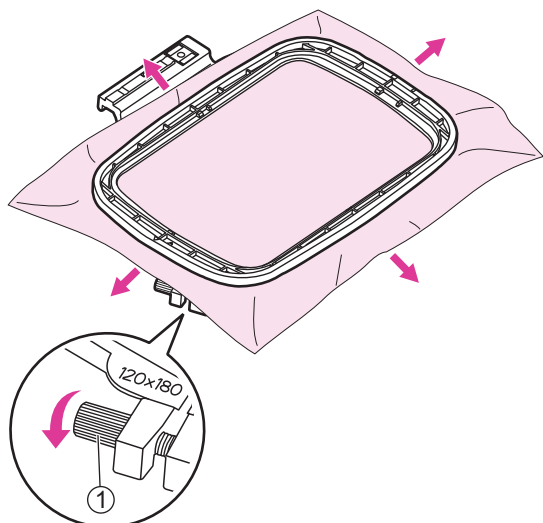


Place the outer hoop on a sturdy flat space.

Make sure the fabric with right side upwards, place the stabilizer underneath the fabric for better support, and then place the fabric and stabilizer altogether on the outer hoop. It can achieve better embroidery performance.

Align both triangular marks and fix the fabric in place.

- ① Inner hoop's triangular mark
- ② Outer hoop's triangular mark



Place the inner hoop on the fabric and press firmly until they are securely fit to outer hoop perfectly. If the inner hoop cannot fit properly, loosen the outer hoop's fastening screw and adjust until fitted.

When the fabric and inner hoop are completely fit into the outer hoop, pull the fabric from the four sides marked with the arrows so that the fabric is stretched drum-tight in the hoop, and then press the inner hoop downwards so that it sinks into the outer hoop a little and tighten the fastening screw.

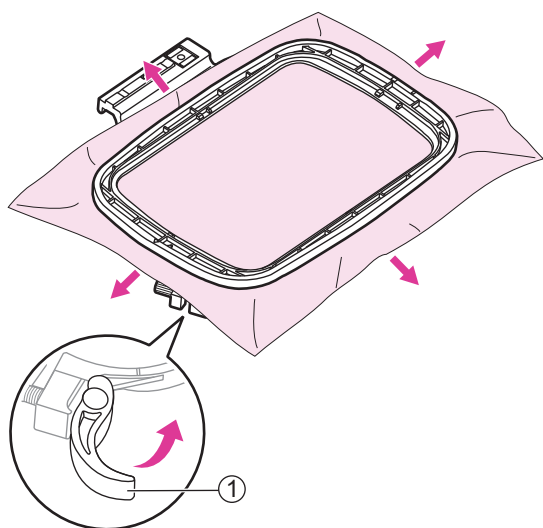
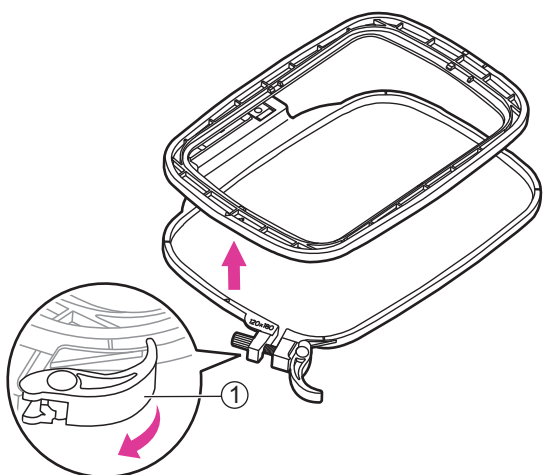
① Fastening screw

❖ Use the quick release device

If same type of fabric is used for embroidery, open the quick release device under the outer hoop.

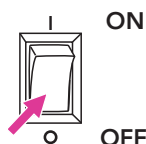
Separate the inner hoop and outer hoop.

① Quick release device

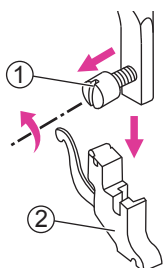


Place the inner hoop on the fabric and press firmly until they are securely fit to outer hoop perfectly, pull the fabric from the four sides marked with the arrows so that the fabric is stretched drum-tight in the hoop, and then press the inner hoop downwards so that it sinks into the outer hoop a little and close the quick release device.

Preparation for embroidery

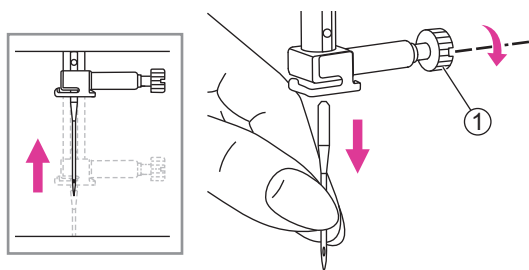


Turn the power switch to off ("O"). Raise the presser foot lifter.



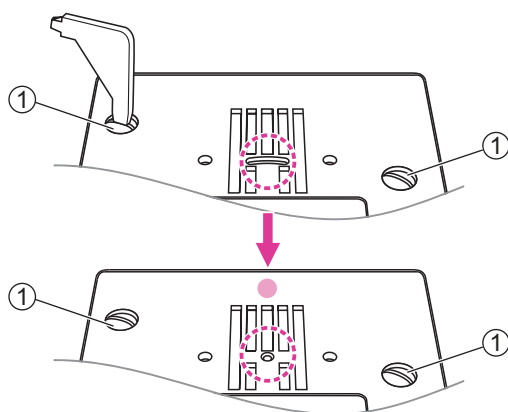
Loosen the screw counter-clockwise to remove the presser foot holder.

- ① Screw
- ② Presser foot holder



Turn the handwheel toward you to raise the needle then loosen the needle clamp screw to remove the needle.

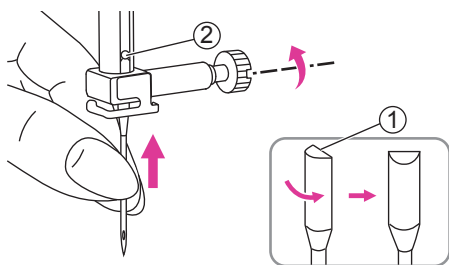
- ① Needle clamp screw



Remove the screws on the needle plate then remove the needle plate.

Change the straight stitch plate and tighten the screws.

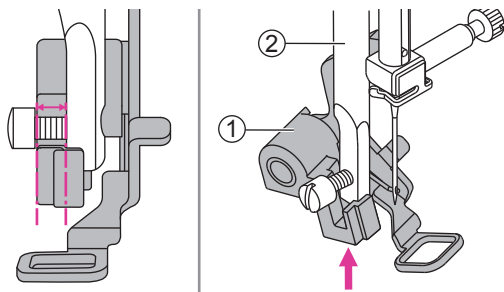
- ① Screws



Inserting a 75/11 needle, keep the flat side of the shaft to the back.

Please refer to page "Matching needle/fabric/thread" and "Replacing the needle" for more information.

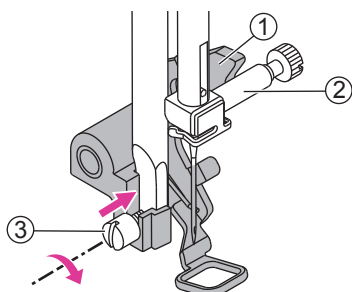
- ① Flat side of the shaft
- ② Pin



Make the embroidery foot lever upwards.

Tilt the embroidery foot and insert it from left to right so that the notch fits into the presser foot bar, and then push the embroidery foot upwards until it is aligned with the screw.

- ① Embroidery foot
- ② Presser foot bar



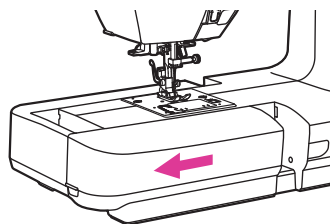
The embroidery foot lever will be against the top of the Needle clamp screw, then tighten the screw by using the screwdriver.

- ① Embroidery foot lever
- ② Needle clamp screw
- ③ Screw

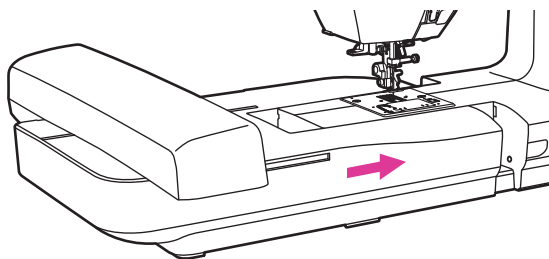


Note

Please check and make sure the presser foot is raised and remove embroidery hoop first before attaching embroidery unit onto the machine.



Hold the sewing table horizontally, then pull toward the left to remove it from the machine.



Slide the embroidery unit onto the machine arm. Push lightly until the unit clicks into place.

⚠ Attention

Once embroidery unit is installed, foot control cannot be operated.

Starting the connection

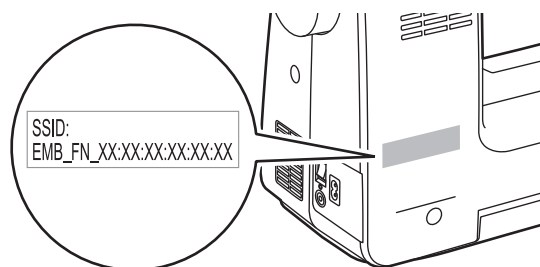


🔍 MyPatterns

❖ Embroidery software installation

Search "MyPatterns" on Google Play/Apple Store to download and install the application in order to perform the following setting steps.

To reach the best user experience, we recommend you to use the tablet to connect with the machine for further operation.



Note

The SSID sticker is on the back of the machine. The SSID starts with EMB_FN_XX:XX:XX:XX:XX:XX. Each machine has its own SSID and please take note of it before starting the connection, especially in a public environment.

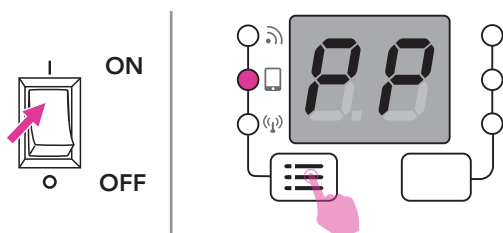
Connection mode: Router



❖ The first time to set up

Before setting up, please confirm that the environment is equipped with the WiFi router and make sure it is connected to the internet in order to starting the connection.

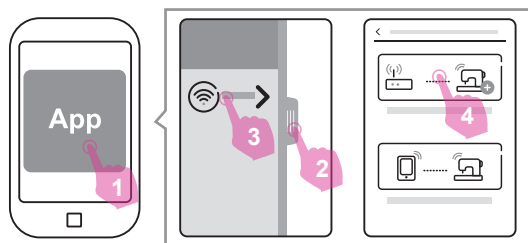
Please set the SSID of your WiFi access station in English letters or digital numbers then re-connect again.



Turn on the power, and check if the screen shows "PP" and the second light is on. If it is not, please long press the connection mode switch button to switch the light.

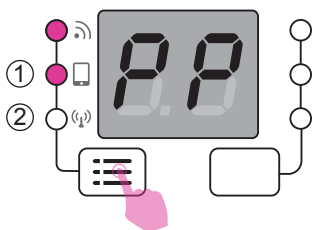


The WiFi light will start flashing, which means ready to connect machine.



Please open the app on your portable device. (smart phone or tablet)

Please slide or press the bar at the left side, and press "Add a new connection". Then choose "Set up the Router Mode connection."



Note

In embroidery mode, long pressing the group switch button can change the connection mode according to your demand.

The connection mode is including:

- ① Point-to-point mode(PP)
- ② Router mode(AP)

Note: the connection mode switch button could not apply until AP mode was set up.



❖ Connection

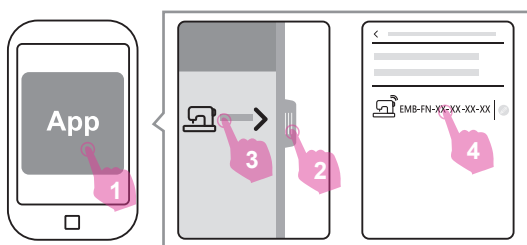
When router mode setting was done, the machine will connect with the router automatically next time.



When the screen shows AP and the WiFi light start flashing, the machine is ready to connect with the App.



Start the App and the connection will follow automatically. When the connecting is done, the screen shows "GO" and the connection with the App is successful.



Note

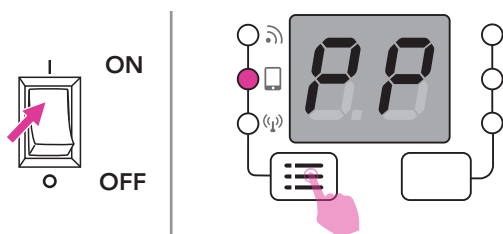
If the connecting does not follow automatically, please slide or press the bar at the left side, and press "Machine in the router network." The connected machines with the router will be indicated and press one to enable the connection.

Connection mode: Point-to-point



⚠ Attention

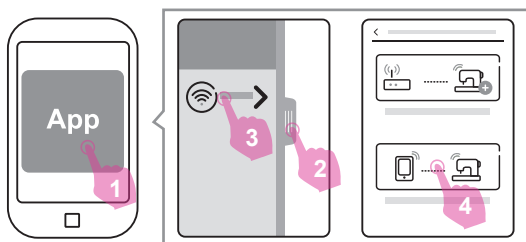
In this connection mode, the internet function of the portable device itself cannot be used and the cloud download function cannot be used as well.



Turn on the power, and check if the screen shows "PP" and the second light is on. If it is not, please long press the connection mode switch button to switch the light.

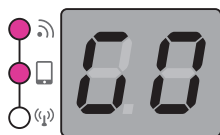


The WiFi light will start flashing, which means ready to connect machine.



Please open the app on your portable device. (smart phone or tablet)

Please slide or press the bar at the left side, and press "Add a new connection". Then choose "Set up the point-to-point Mode connection."



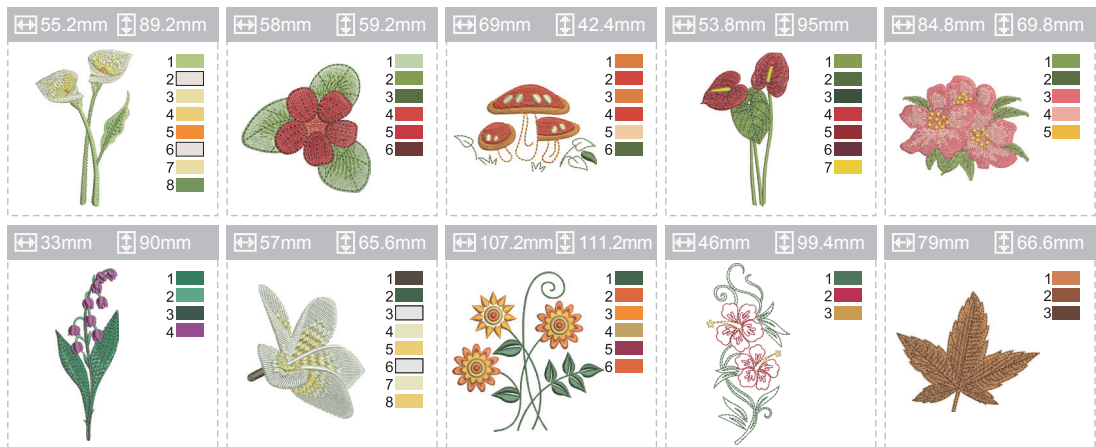
Once it has successfully connected to the APP, the screen will show GO, which means that the embroidery function can now be normally executed.

Note

Point-to-point mode is recommended for performing embroidery when there is a lot of wireless signal interference environment, this will reduce the interference among different devices.

Embroidery pattern chart

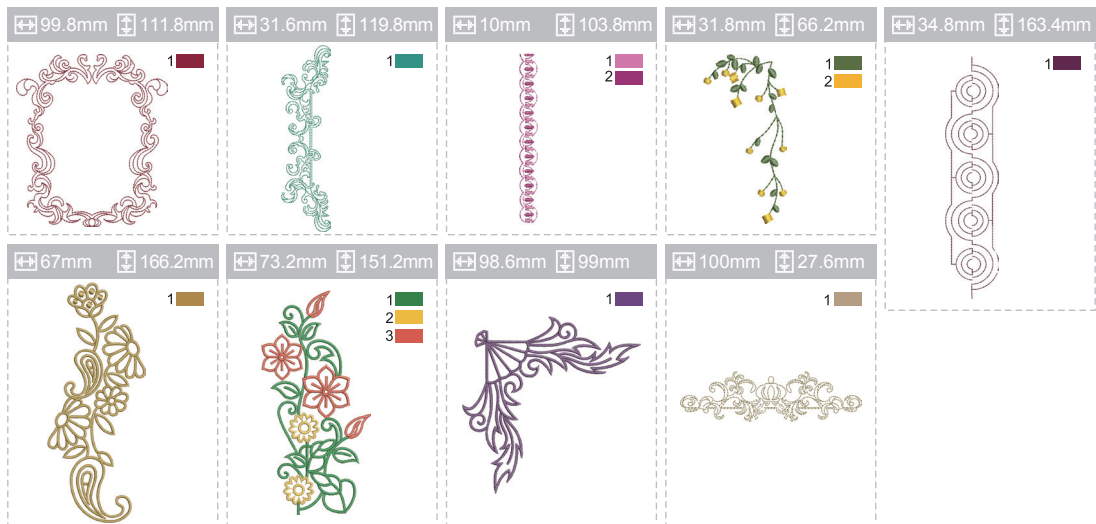
■ Floral & Plant



■ Animal



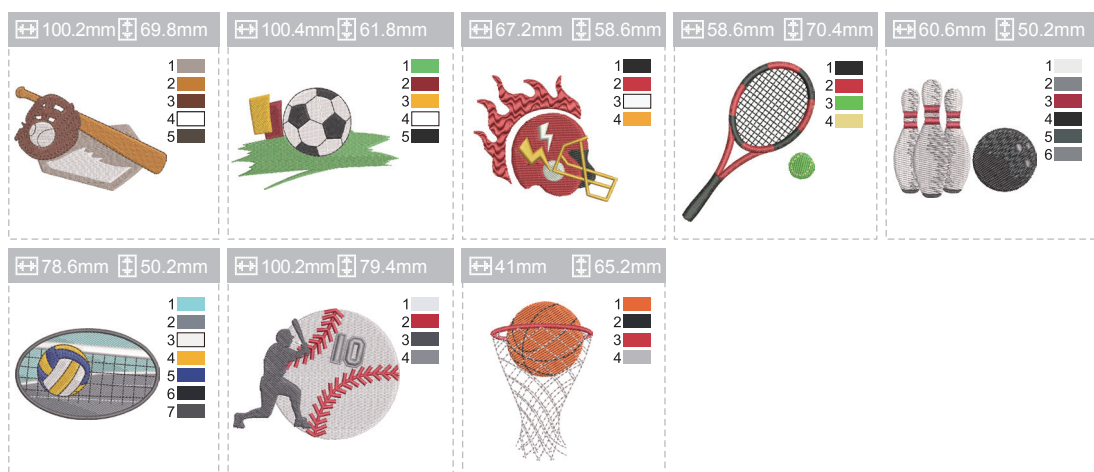
■ Frame



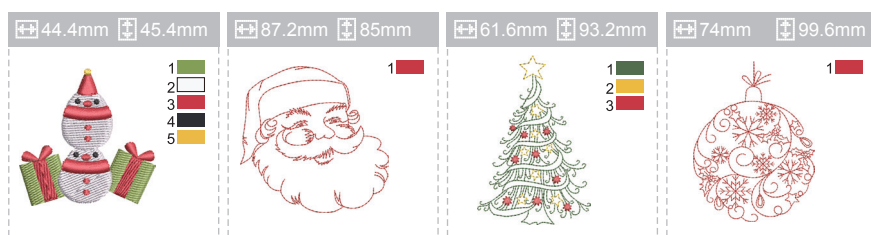
Totem



Sport



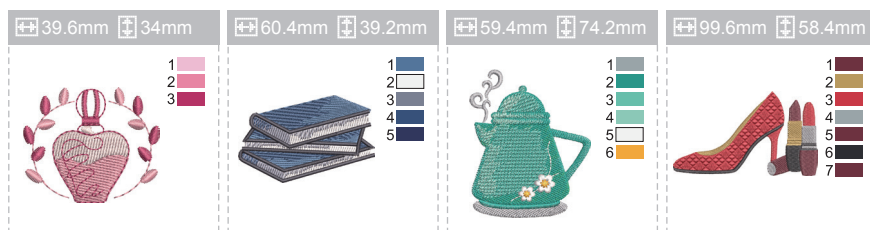
Christmas



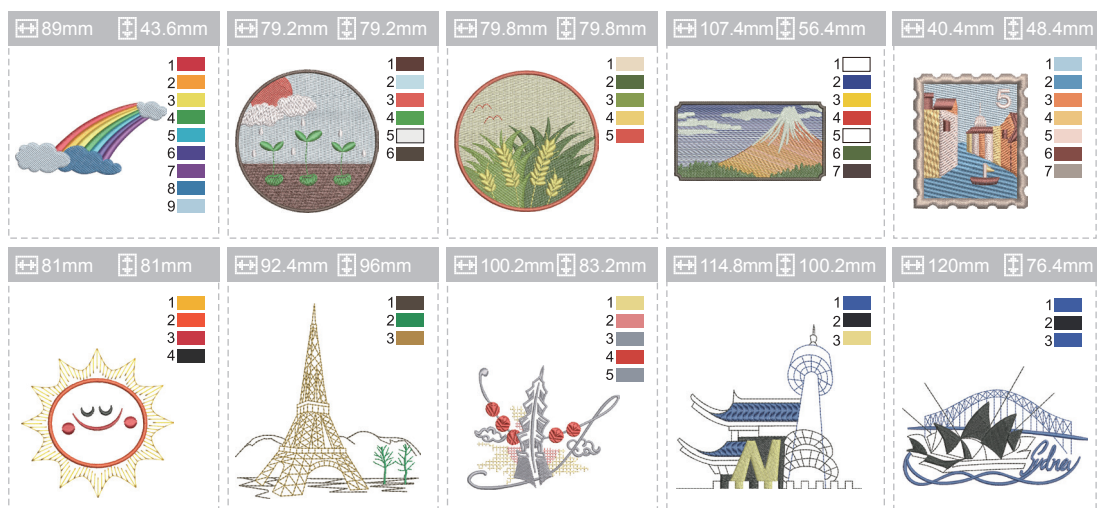
■ Halloween



■ Houseware



■ Scenery



Embroidery letter chart

■ Franklin Gothic Medium

A B C D E F G H I J K L M N O P Q R S T U V W X Y Z
a b c d e f g h i j k l m n o p q r s t u v w x y z
0 1 2 3 4 5 6 7 8 9 ! ; # \$ % & () , _ - . • : = +
< > ? ¿ ~ / @
À Á Â Ã Ä Å Æ Ç È É Ê Ë Ì Í Î Ï Ñ Ò Ó Ô Õ Ö Ø Ù Ú Û Ü
ß À Á Â Ã Ä Å Æ Ç È É Ê Ë Ì Í Î Ï Ñ Ò Ó Ô Õ Ö Ø Ù Ú Û Ü
ß à á â ã ä å æ ç è é ê ë ì í î ï ñ ò ó ô õ ö ø ù ú û ü þ ã á ç ģ ħ ij ł ń œ
ś ș ź ż

■ Times New Roman Bold

A B C D E F G H I J K L M N O P Q R S T U V W X Y Z
a b c d e f g h i j k l m n o p q r s t u v w x y z
0 1 2 3 4 5 6 7 8 9 ! ; # \$ % & () , _ - . • : = +
< > ? ¿ ~ / @
À Á Â Ã Ä Å Æ Ç È É Ê Ë Ì Í Î Ï Ñ Ò Ó Ô Õ Ö Ø Ù Ú Û Ü
ß À Á Â Ã Ä Å Æ Ç È É Ê Ë Ì Í Î Ï Ñ Ò Ó Ô Õ Ö Ø Ù Ú Û Ü
ß à á â ã ä å æ ç è é ê ë ì í î ï ñ ò ó ô õ ö ø ù ú û ü þ ã á ç ģ ħ ij ł ń œ
ś ș ź ż



Do not dispose of electrical appliances as unsorted municipal waste, use separate collection facilities.

Contact your local government for information regarding the collection systems available.

If electrical appliances are disposed of in landfills or dumps, hazardous substances can leak into the groundwater and get into the food chain, damaging your health and well-being.

When replacing old appliances with new ones, the retailer is legally obligated to take back your old appliance for disposal at least for free of charge.

SEWING+WIFI EMBROIDERY COMBO