

SMART

ALFA



Instruction Manual

Contents

Important safety instructions.....	2
Accessories	4
Parts of the machine.....	5
Buttons on the machine	6
Information of the LCD	7
Buttons of the LCD	8
Connecting the machine.....	10
Foot control.....	11
Bobbin winding	12
Bobbin insertion.....	14
Top threader	15
Side thread cutter	18
Lifting the presser foot	18
Adjusting the presser foot pressure.....	18
Thread tension.....	19
Changing the presser foot holder	20
Presser foot user guide	21
Needle selection guide	22
Replacing the needle.....	23
Raising and lowering feed dogs	24
Pattern balance adjustment.....	24
Reverse stitching	25
Sewing with free arm	25
Changing sewing direction	26
Sewing thick fabrics.....	26
Sewing table	27
Using the Edge & quilting guide	27
Using the twin needle	28
Memory function	30
Combo function	36
Machine Settings	43
Cleaning the screen.....	46
Cleaning the sewing machine surface.....	46
Cleaning the hook.....	47
Sewing Light.....	48
Trouble shooting guide	49

Important safety instructions

When using an electrical appliance, basic safety should always be followed, including the following:


Read all instructions before using this sewing machine.

DANGER - To reduce the risk of electric shock:

1. An appliance should never be left unattended when plugged in.
2. Always unplug this appliance from the electric outlet immediately after using and before cleaning.

WARNING - To reduce the risk of burns, fire, electric shock, or injury to persons:

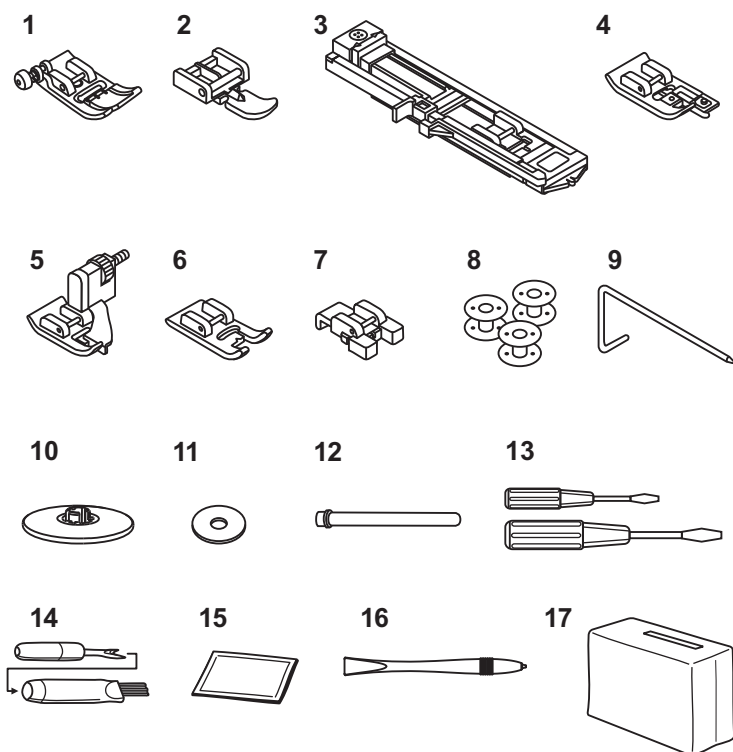
1. Read the instruction carefully before you use the machine.
2. Keep the instructions at a suitable place close to the machine and hand it over if you give the machine to a third party.
3. Use the machine only in dry locations.
4. Never leave the machine unattended with children or elderly people due to they may not be able to estimate the risk.
5. This appliance can be used by children aged from 8 years and above and persons with reduced physical, sensory or mental capabilities or lack of experience and knowledge if they have been given supervision or instruction concerning use of the appliance in a safe way and understand the hazards involved.
6. Children shall not play with the appliance.
7. Cleaning and user maintenance shall not be made by children without supervision.
8. Always switch off the machine if you carry out preparation for work (change the needle, feed the yarn thru the machine, change the footer, etc.).
9. Always unplug the machine if you leave it unattended, to avoid injury by expediently switch on the machine.
10. Always unplug the machine if you changing the lamp or carry out maintenance (oiling, cleaning).
11. Don't use the machine if it's wet or in humid environment.
12. Never pull at the cord, always unplug the machine by gripping the plug.
13. If the LED lamp is damaged or broken, it must be replaced by the manufacturer or its service agent or a similarly qualified person, in order to avoid a hazard.
14. Never place anything on the pedal.

- 
15. Never use the machine if the air vents are blocked keep the air vents of the machine and the foot pedal free from dust, fusel and leftovers.
 16. The machine may only be used with foot pedal type C-9003.
 17. The sound pressure level at normal operation is smaller than 75dB(A).
 18. Do not dispose of electrical appliances as unsorted municipal waste, use separate collection facilities.
 19. Contact your local government for information regarding the collection systems available.
 20. If electrical appliances are disposed of in landfills or dumps, hazardous substances can leak into the groundwater and get into the food chain, damaging your health and well-being.
 21. When replacing old appliances with new ones, the retailer is legally obligated to take back your old appliance for disposal at least for free of charge.
 22. The appliance is not to be used by persons (including children) with reduced physical, sensory or mental capabilities, or lack of experience and knowledge, unless they have been given supervision or instruction. (For outside Europe)
 23. Children being supervised not to play with the appliance. (For outside Europe)

SAVE THESE INSTRUCTIONS

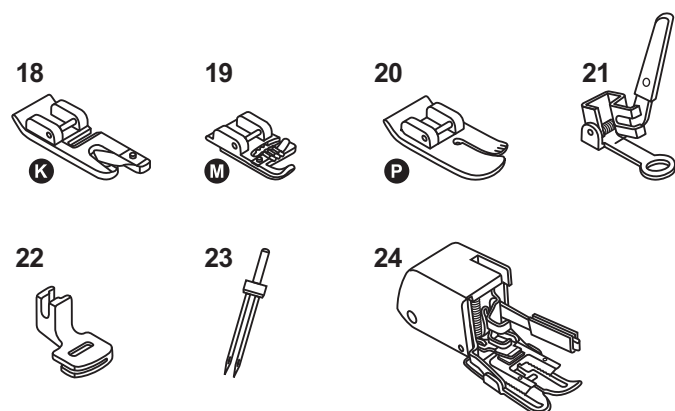
This sewing machine is intended for household use only.

Accessories



Standard accessories

1. All purpose foot (T)
2. Zipper foot (I)
3. Buttonhole foot (D)
4. Overcasting foot (E)
5. Blind hem foot (F)
6. Satin stitch foot (A)
7. Button sewing foot (H)
8. Brush/ Seam ripper
9. Spool holder
10. Edge/quilting guide
11. Bobbin (3x)
12. Screwdriver (L & S)
13. Pack of needle
14. Spool pin felt
15. Second spool pin
16. Touch panel stylus
17. Soft cover



Optional accessories

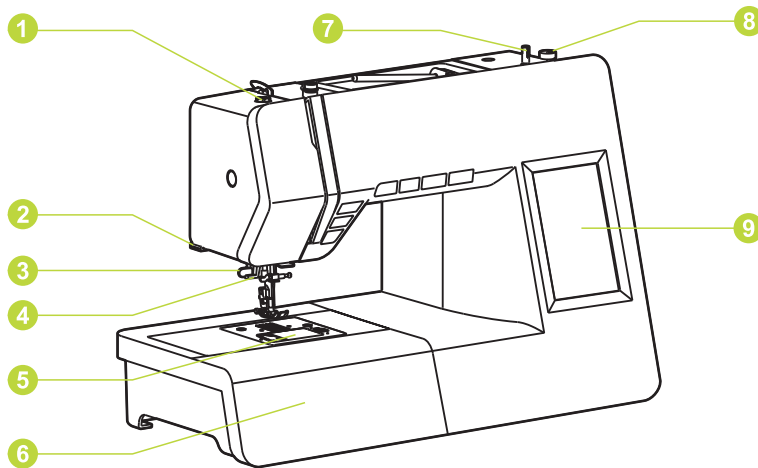
18. Cording foot (M)
19. Hemmer foot (K)
20. Quilting foot (P)
21. Darning/ Embroidery foot
22. Gathering foot
23. Twin needle
24. Walking foot

Note:

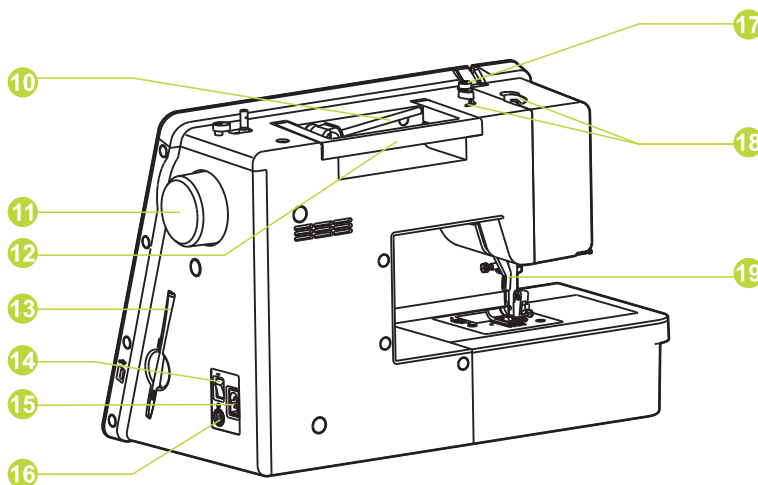
Accessories are stored inside the accessory box.

Optional accessories are not supplied with this machine; they are however available as special accessories from your local dealer.

Parts of the machine

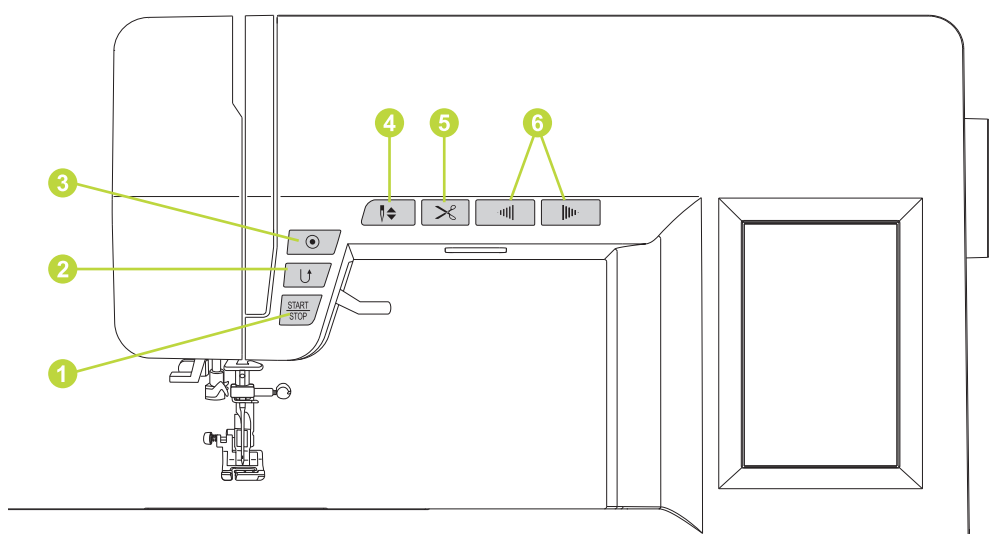


1. Presser foot pressure
2. Thread cutter
3. Buttonhole lever
4. Bobbin winder spindle
5. Bobbin winder stopper
6. Auto needle threader
7. Bobbin cover plate
8. Sewing table and accessory box



9. LCD screen
10. Handwheel
11. Horizontal spool pin
12. Handle
13. Bobbin thread guide
14. Upper thread guide
15. Stylus
16. Main power switch
17. Foot controller connector
18. Power cord socket
19. Presser foot lifter

Buttons on the machine



1.Start/stop button

The machine will start running when start/stop button is pressed and will stop when pressed the second time. The machine will rotate slowly at the beginning of sewing.

The sewing speed will increase slowly until reaching the speed setting selected with the speed limiting adjustment lever.

2.Reverse button

The patterns 01, 04, 07, 22 and 23 can be sewn in reverse.

During sewing, press the reverse button to sew in reverse direction. Release the button to go back to forward direction.

If you press the reverse button before starting to sew, when press the start/stop button or the foot control the machine will permanently sew in reverse and press the button again to sew forward.

If you press the reverse button when sewing any other patterns, the machine will immediately sew locking stitches and automatically stop.

3.Auto-lock button

When the patterns 01-05, 07-09, 12, 14-23, 28 and 49 are selected, the machine will immediately sew 3 locking stitches when the auto-lock button is pressed, then automatically stop.

Except for the pattern 01-09, 12, 14-23, 28, 37-44 and 49 press the auto-lock button, the machine will sew 3 locking stitches at the end of the current pattern and automatically stop.

4.Needle up/down position button

Press this button to move the needle to either up or down position.

By pressing the needle up/down button the needle will make half a stitch. Depending on the actual needle position it will stop in the opposite position, either at the highest or the lowest position. At the same time the needle stop position after sewing is permanently set. The needle stop position is shown on the LCD.

5.Thread cutter button

Press this button after finishing sewing and the machine will trim the threads.

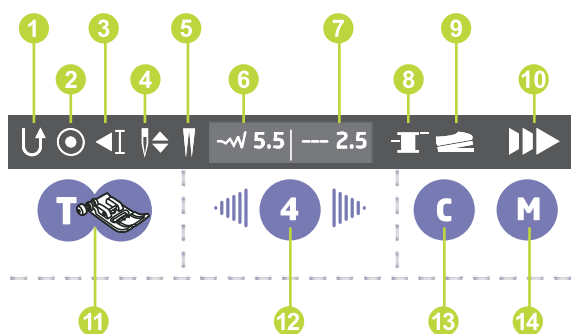
6. Speed control buttons

Press this button to change the sewing speed.

To increase the sewing speed, press the button "+".

To decrease the sewing speed, press the button "-".

Information of the LCD



1. Reverse
2. Auto-lock
3. Auto-stop
4. Needle position
5. Twin needle
6. Suggested stitch width
7. Suggested stitch length
8. Bobbin winding
9. Foot control
10. Speed
11. Suggested presser foot
12. Tension
13. Combo
14. Memory

Note:

Once the sewing function is launched, the function symbol will show the white on status bar.

Buttons of the LCD



Setting button

Press the button to set the language, brightness, parental control, screen saver, voice, update and software version information.



Tension adjustment buttons

When you select a stitch the machine will automatically set the recommended thread tension which will be indicated by numbers on the LCD screen.

To increase the tension, press the right button to the next number up. To reduce the tension, press the left button to the next number down. To return the standard press the middle button.



Combo button

Press the button to set up stitch combination, totally 30 sets for each 20 stitches.



Memory button

Press the button to memory current stitch parameter with totally 30 sets.



Pattern adjustment button

When you sew on a particular fabric, adjust them with the pattern adjustment button.



Mirror button

Press this button to sew a reflection pattern until the mirror button is pressed again.



Needle button

Press the twin needle button, and the machine automatically reduces the maximum width for the twin needle sewing.

Press the button again to return to single needle sewing.





1.0



Stitch length adjustment button

When you select a stitch the machine will automatically set the recommended stitch length which will be indicated by numbers on the LCD screen.

For a shorter stitch, press the button "-". For a longer stitch, press the button "+". To return the standard press the value.

The stitch length can be adjusted between "0.0-4.5", certain stitches have a limited stitch length range.



Stitch width adjustment button

When you select a stitch, the machine will auto-matically set the recommended stitch width, which will be indicated by numbers on the LCD screen.

For a narrower stitch, press the button "-". For a wider stitch, press button "+". To return the standard press the value.

The stitch width can be adjusted between "0.0-7.0", certain stitches have a limited stitch width.

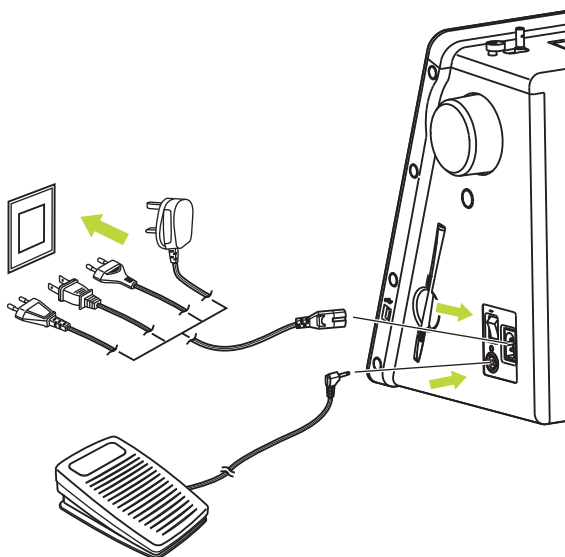
With pattern 01-04, 06, 15 and 22-23 selected, the needle position is shown on the screen. The position can be adjusted by the stitch width adjustment buttons.

Pressing the "-" button, will move the needle to the left and pressing the "+" button, will move the needle to the right.

Connecting the machine

Attention:

Always make sure that the machine is unplugged from power source and the main switch is on "O" when the machine is not in use and before inserting or removing parts.

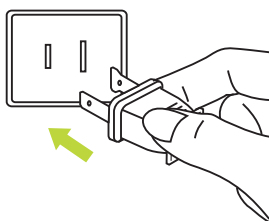


Before connecting the power supply, make sure that the voltage and frequency shown on the machine is conforming with your electrical power.

Place machine on a stable surface.

1. Connect the power line cord to the machine by inserting the 2-hole plug into the power cord socket.
2. Connect the power line plug to the electric outlet.
3. Turn on the power switch.
4. The sewing lamp will light up when the switch is turned on.

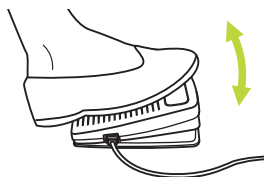
To disconnect, turn the power switch to the off position, then remove plug from outlet.



Polarized plug information

This appliance has a polarized plug (one blade wider than the other), to reduce the risk of electrical shock; this plug will fit in a polarized outlet only one way. If the plug does not fit fully in the outlet, reverse the plug. If it still does not fit, contact a qualified electrician to install the proper outlet. Do not modify the plug in any way.

Foot control



With the sewing machine turned off, insert the foot control plug into its connector on the sewing machine. Turn on the sewing machine, and then slowly depress the foot control to start sewing. Release the foot control to stop the sewing machine.



Note:

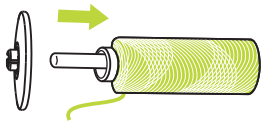
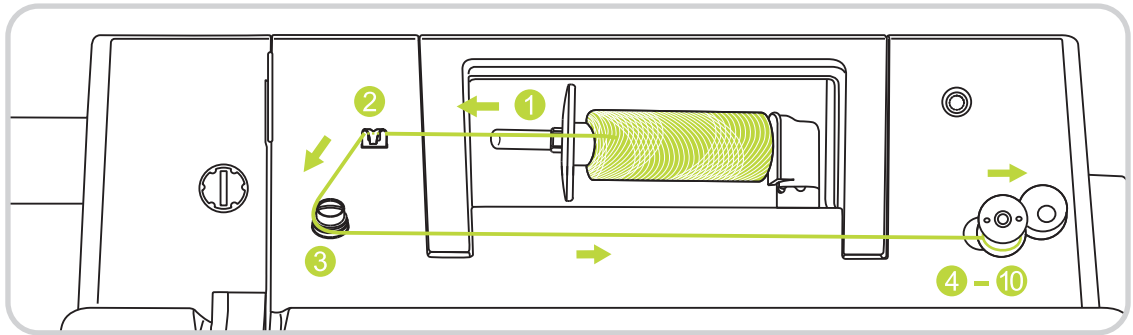
The setting of the Speed control buttons will limit the maximum speed of the machine.



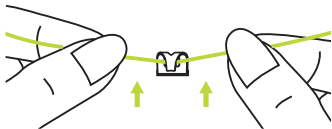
Attention:

Consult a qualified electrician if in doubt as how to connect the machine to the power source. Unplug the power cord when the machine is not in use.

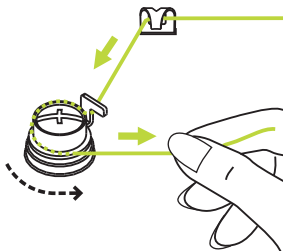
Bobbin winding



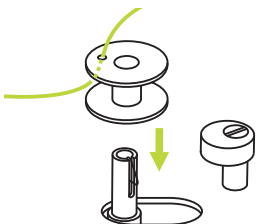
1. Place the thread and spool holder onto the spool pin. For smaller spools of thread, place spool holder with the small side next to the spool.



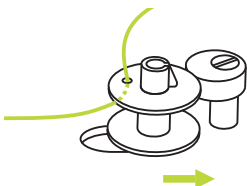
2. Draw the thread from the spool through the upper thread guide.



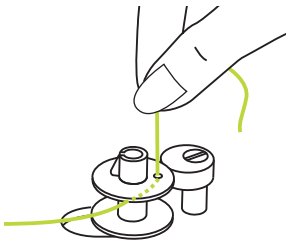
3. Wind the thread contrary clockwise around the bobbin winder tension discs.



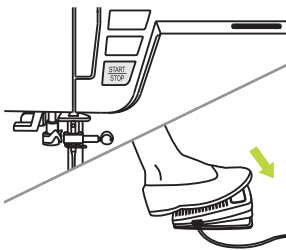
4. Place the thread end through one of the inner holes in the bobbin as illustrated and place empty bobbin on the spindle.



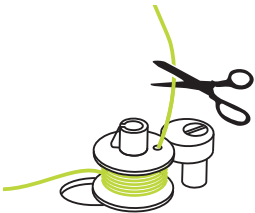
5. Push the bobbin to right.



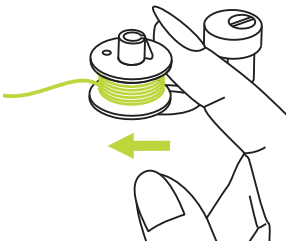
6. Hold the thread tail securely in one hand.



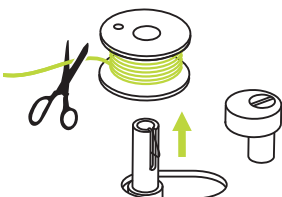
7. Press the Start/stop button or the foot control.



8. After the bobbin has wound a few turns stop the machine and cut the thread near the hole of the bobbin.
Continue filling the bobbin until it is full.



9. Once the spool is full, it rotates slowly. Release the pedal or stop. Push the bobbin winder spindle to left.

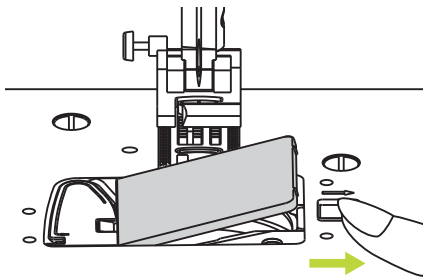


10. Cut the thread and then remove the bobbin.

➔ Please Note:

When the bobbin winder switch is placed on the right, "bobbin winding position", the machine will not sew and the handwheel will not turn. To start sewing, push the bobbin winder switch to the left "sewing position".

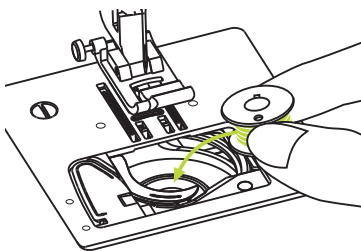
Bobbin insertion



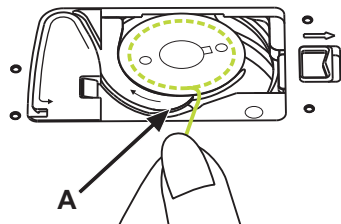
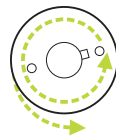
! Attention:

Turn power switch to off ("O") before inserting or removing the bobbin.

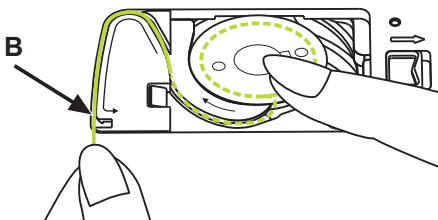
When inserting or removing the bobbin, the needle and presser foot must be fully raised. Remove the bobbin cover plate and bobbin.



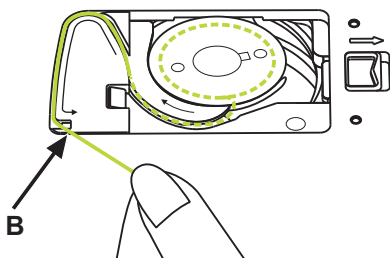
Insert the bobbin in the bobbin case with the thread running in a counterclockwise direction (arrow).



Pull the thread through the slit (A).

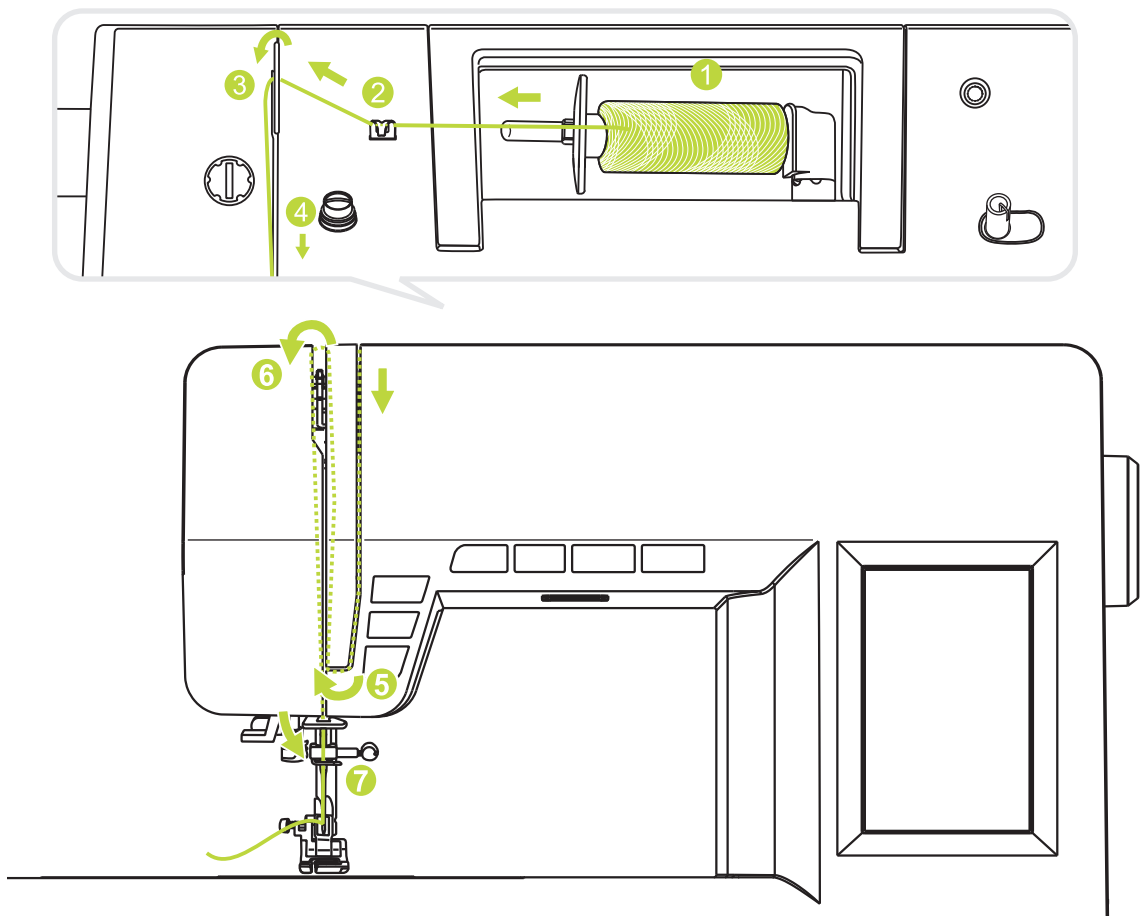


With a finger held gently on top of the bobbin. Pull the thread at the arrow markings into the thread guide slot.



To cut off excess thread pull it toward you to cut it with the cutter at point (B). Close the bobbin cover plate.

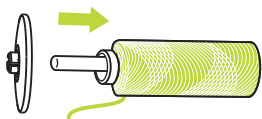
Top threader



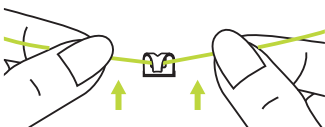
➡ Attention:

It is important to carry out the threading correctly as by not doing so several sewing problems could result.

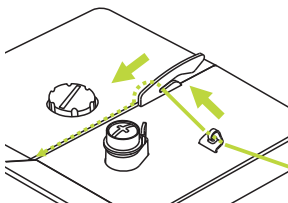
Start by raising the needle to its highest point, and also raise the presser foot to release the tension discs.



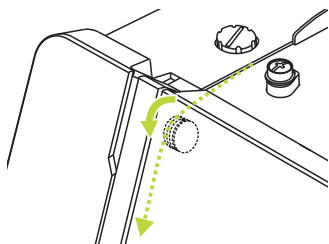
1. Place the thread and spool holder onto the spool pin. For smaller spools of thread, place spool holder with the small side next to the spool.



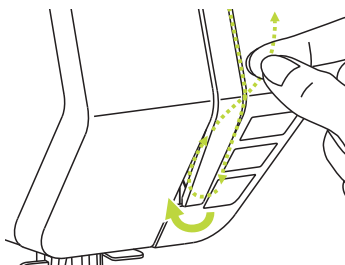
2. Draw the thread from the spool through the upper thread guide.



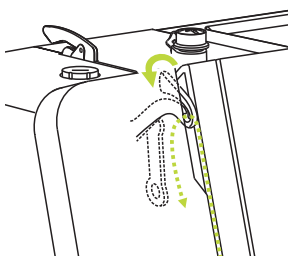
3. Guide the thread around the thread guide pulling the thread through the pre-tension spring as illustrated.



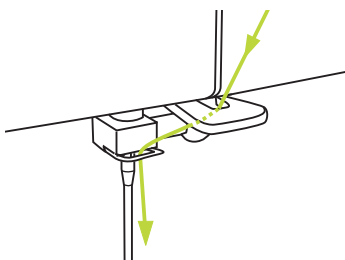
4. Thread the tension module by passing the thread between the silver discs.



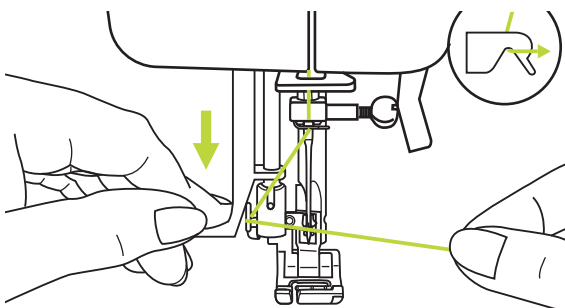
5. Then, down and around the check spring holder.



6. At the top of this movement, pass the thread from right to the left through the slotted eye of the take-up lever and then downwards again.



7. Pass the thread behind the flat, horizontal thread guide. Guide the thread through the wire loop.



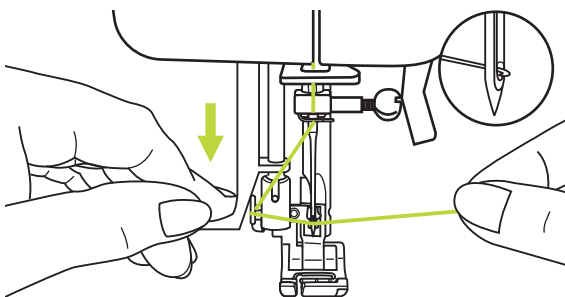
! Attention:

Turn power switch to off ("O") when carrying out any of the below operations!

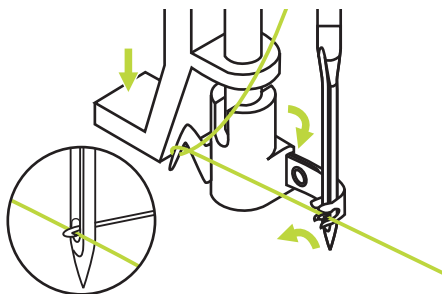
Raise the needle to its highest position and lower the presser foot.

Lower the needle threader lever slowly and draw the thread through the thread guide as illustrated and then to the right.

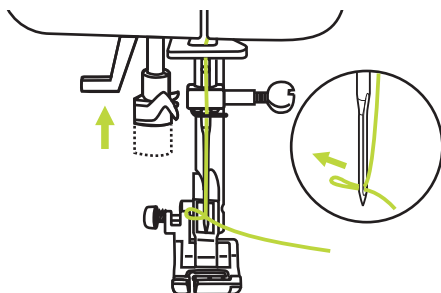
The needle threader automatically turns to the threading position and the hook pin passes through the needle eye.



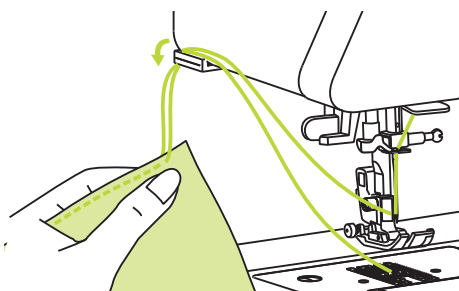
Take the thread in front of the needle.



Hold the thread loosely and release the lever slowly. The hook will turn and pass the thread through the needle eye forming a loop. Pull the thread through the needle eye.



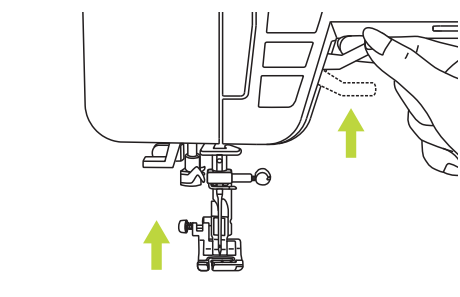
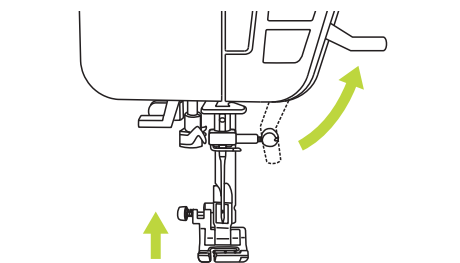
Side thread cutter



Raise the presser foot. Remove the fabric, draw the threads to the left side of the face cover and cut using the thread cutter.

The threads are cut at the proper length to start the next seam.

Lifting the presser foot



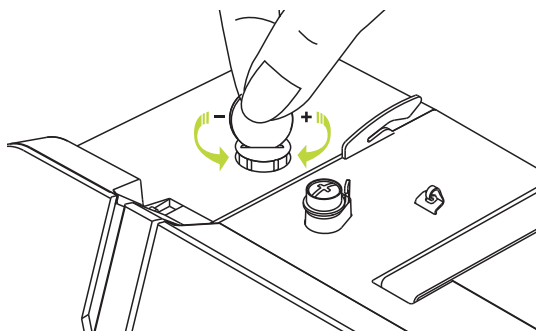
! Attention:

The needle must always be at the highest position.

The presser foot lifter raises and lowers the presser foot.

When sewing several layers or thick fabrics, the presser foot can be raised a second stage for easy positioning of the work.

Adjusting the presser foot pressure



The presser foot pressure of the machine has been pre-set and requires no particular readjustment according to the type of fabric (light-or-heavy weight).

However, if you need to adjust the presser foot pressure, turn the presser adjusting screw with a coin.

For sewing very heavy fabric, loosen the pressure by turning the screw counter clockwise, and for thin fabric, tighten by turning it clockwise.

Thread tension



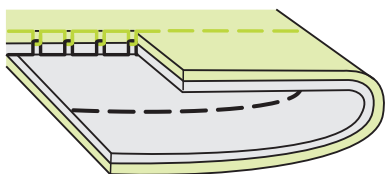
Basic thread tension setting: "4".

To increase the tension, adjust to the next number up. To reduce the tension, adjust to the next number down.

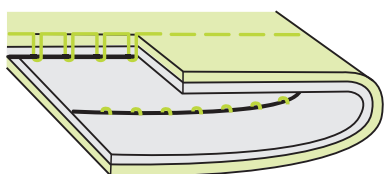
Proper setting of tension is important to good sewing.

For all decorative sewing you will always obtain a nicer stitch and less fabric puckering when the upper thread appears on the bottom side of your fabric.

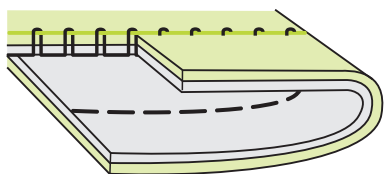
There is no single tension setting appropriate for all the stitch functions and fabrics.



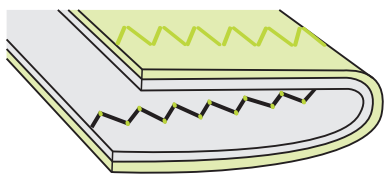
Normal thread tension for straight stitch sewing.



Thread tension is too loose for straight stitch sewing. Adjust to higher number.



Thread tension is too tight for straight stitch sewing. Adjust to lower number.



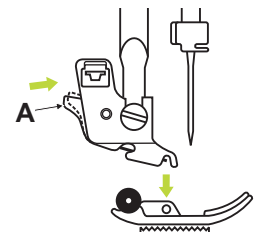
Normal thread tension for zig zag and decorative sewing.



Changing the presser foot holder

Attention:

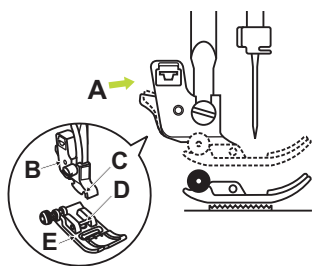
Turn power switch to off ("O") when carrying out any of the below operations!



Removing the presser foot

Raise the presser foot.

Press the black lever (A) and the foot will disengage.

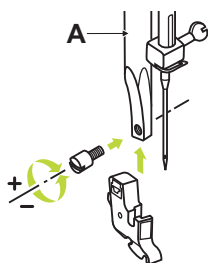


Attaching the presser foot

Lower the presser foot holder (B) until the cut-out (C) is directly above the pin (D).

Press the black lever (A).

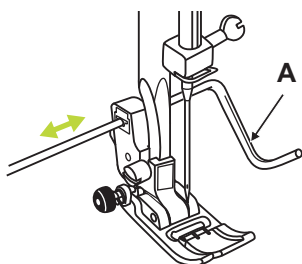
Lower the presser foot holder (B) and the presser foot (E) will engage automatically.



Removing and Attaching the presser foot holder

Raise the presser foot bar (A).

Remove and Attach the presser foot holder (B) as illustrated.





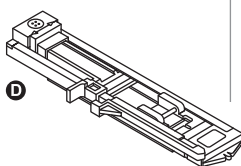

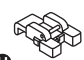



Attaching the edge/quilting guide

Attach the edge/quilting guide (A) in the slot as illustrated.

Adjust according to need for hems, pleats, etc.

Presser foot user guide

PRESSER FOOT	APPLICATION	PRESSER FOOT	APPLICATION
 <p>T All purpose foot (T)</p>	General sewing, Patchwork stitches, Decorative stitching, Smocking, Fagoting, etc.	 <p>F Blind hem foot (F)</p>	Blind hem stitching
 <p>I Zipper foot (I)</p>	Inserting zippers	 <p>E Overcasting foot (E)</p>	Overcasting
 <p>D Buttonhole foot (D)</p>	Buttonhole sewing, Bar tack stitches, Darning stitches.	 <p>A Satin stitch foot (A)</p>	Satin stitch sewing
 <p>H Button sewing foot</p>	Button sewing	 <p>P Quilting foot (P)</p>	Quilting

Needle selection guide

In general, fine threads and needles are used for sewing fine fabrics, and thicker threads are used for sewing heavy fabrics.

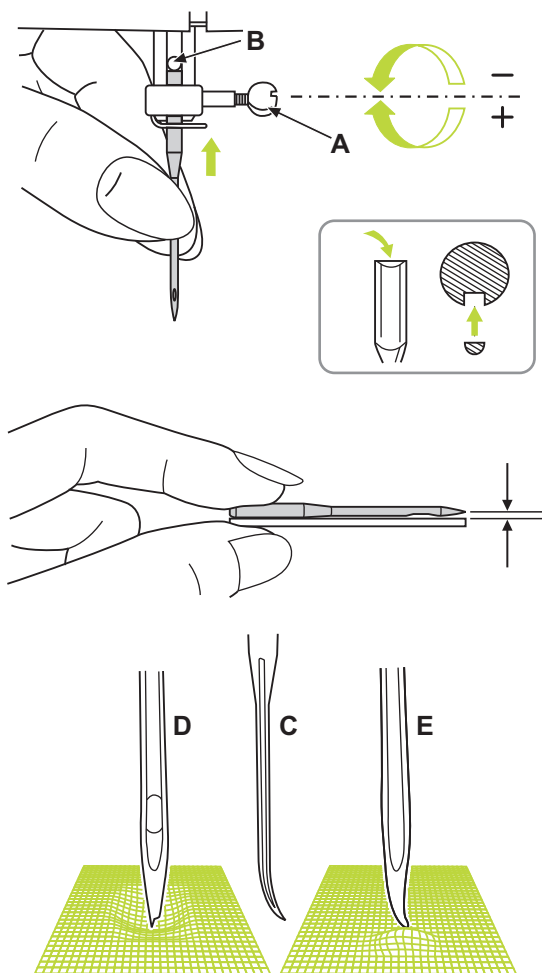
The following table provides information concerning the appropriate thread and needle for various fabrics.

NEEDLE SIZE	FABRICS	THREAD
9-11 (70-80)	Lightweight fabrics-thin cottons, voile, serge, silk, muslin, Qiana, interlocks, cotton knits, tricot, jerseys, crepes, woven polyester, shirt & blouse fabrics.	Light-duty thread in cotton, nylon, polyester or cotton wrapped polyester.
11-14 (80-90)	Medium weight fabrics-cotton, satin, kettleclote, sailcloth, double knits, lightweight woollens.	Most threads sold are medium size and suitable for these fabrics and needle sizes.
14 (90)	Medium weight fabrics-cotton duck, woolen, heavier knits, terrycloth, denims.	Use polyester threads on synthetic materials and cotton on natural woven fabrics for best results.
16 (100)	Heavyweight fabrics-canvas, woollens, outdoor tent and quilted fabrics, denims, upholstery material (light to medium).	Always use the same thread on top and bottom.
18 (110)	Heavy woollens, overcoat fabrics, upholstery fabrics, some leathers and vinyls.	Heavy duty thread, carpet thread.

→ Please Note:

- In general, fine threads and needles are used for sewing fine fabrics, and thicker threads are used for sewing heavy fabrics.
- Always test thread and needle size on a small piece of fabric which will be used for actual sewing.
- Use the same thread for needle and bobbin.
- Use a backing for fine or stretchy fabrics.

Replacing the needle



Attention:

Turn power switch to off ("O") when carrying out any of the below operations!

Change the needle regularly, especially if it is showing signs of wear and causing problems. Loosen the needle clamp screw (A) and remove.

Insert the new needle with the flat side of the shaft facing back.

the needle as far up as it will go.

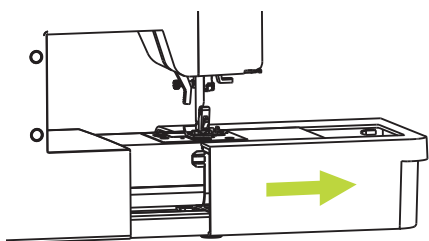
Tighten the screw (A) after inserting the new needle.

Needles must be in perfect condition.

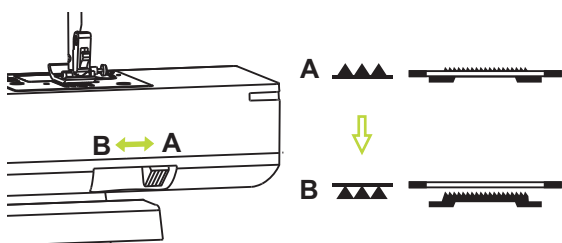
Problems can occur with:

- A. Bent needles
- B. Damaged points
- C. Blunt needles

Raising and lowering feed dogs



With the sewing table off the machine, the feed dog adjustment lever can be seen on the base in back of the sewing machine.



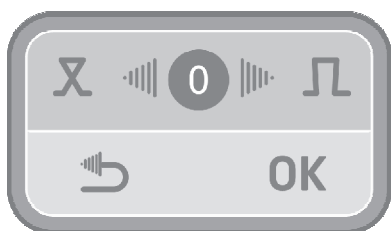
Sliding the lever to the (B) will lower the feed dog, for example during button sewing. If you wish to continue sewing normally, slide the lever to the (A) to raise the feed dogs.

Pattern balance adjustment

If decorative stitch patterns are uneven when sewn on a particular fabric, adjust them with the pattern adjustment button.

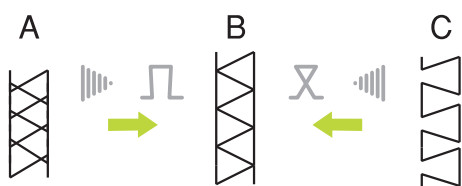
Note:

Always test sew the pattern on a piece of fabric that is the same as the fabric used for your project.



After selecting the pattern, press the pattern adjustment button to enter the screen. Press right or left arrow button to change the values and press "OK" to save the setting. This setting will be kept even you turn the machine off. Press "return" button will exit the menu without saving the changed values.

The changed setting will apply to all patterns. To restore to its default value, press in the middle.

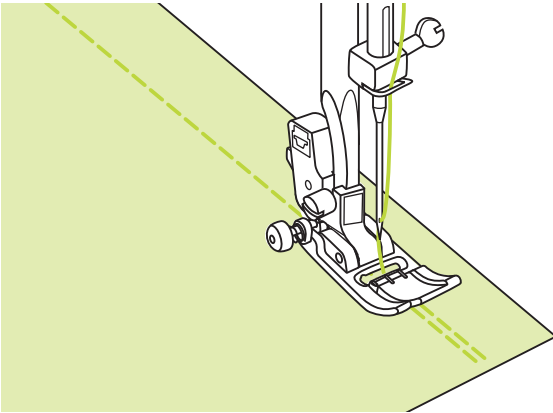


A. When patterns are too compressed, press right arrow button to increase the value.

B. Correct setting.

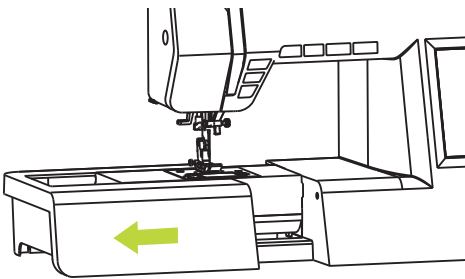
C. When patterns are too drawn out, press left arrow button to decrease the value.

Reverse stitching

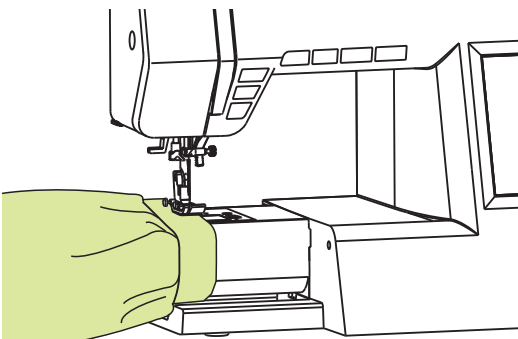


Reverse stitching is used to secure the threads at the beginning and at the end of a seam. Press the reverse button and sew 4-5 stitches. The machine will sew forward when the button is released.

Sewing with free arm

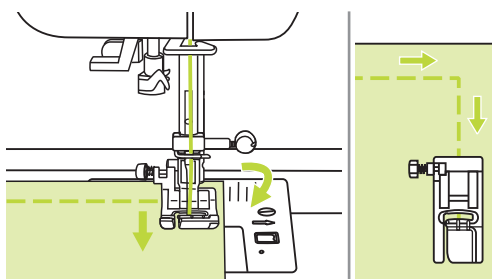


To remove, keep the snap-in sewing table horizontal, and pull it in the direction of the arrow.



Free-arm sewing is used for stitching sleeves, waistbands, pant legs or any other tubular garments.

Changing sewing direction



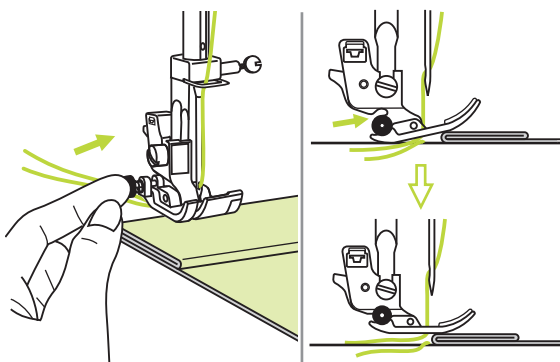
Stop the sewing machine when you reach a corner.

Lower the needle into the fabric manually or by pressing the needle up/ down button once.

Raise the presser foot, use the needle as a pivot and turn the fabric.

Lower the presser foot and resume sewing.

Sewing thick fabrics



The black button on the left side of the presser foot will lock the presser foot in a horizontal position if you push it in before lowering the presser foot.

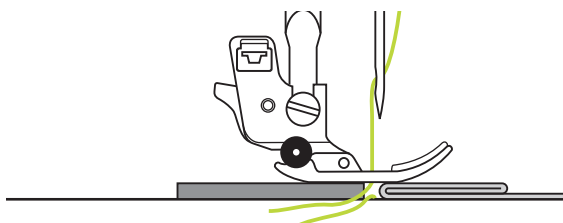
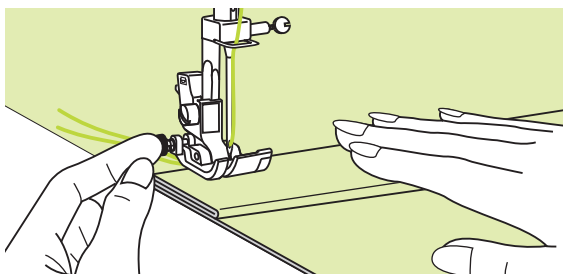
This ensures even feeding at the beginning of a seam and helps when sewing multiple layers of fabric such as sewing over seams when hemming jeans.

When you reach the point of an increased thickness, lower the needle and raise the presser foot. Press the toe of the foot and push in the black button, then lower the foot and continue sewing.

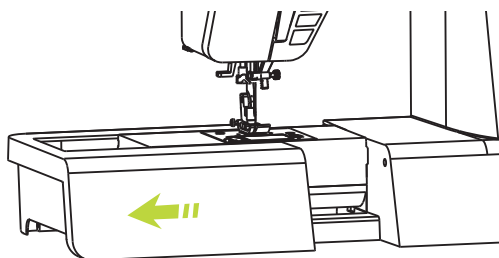
The black button releases automatically after sewing few stitches.

You also can place another piece of fabric with the same thickness at the back of the seam.

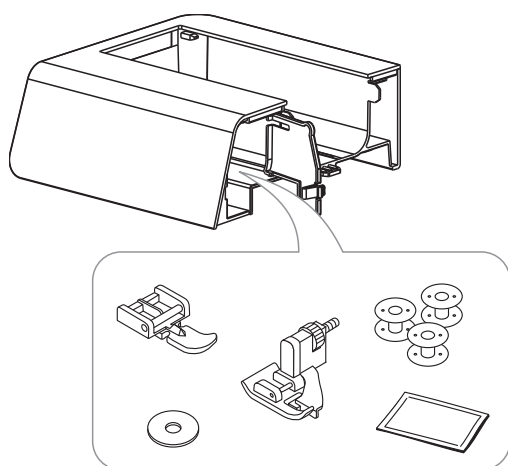
Or support the presser foot while feeding by hand and sewing toward the folded.



Sewing table

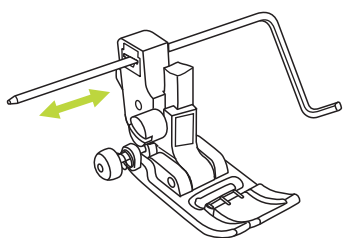


Keep the snap-in sewing table horizontal, and pull it in the direction of the arrow.

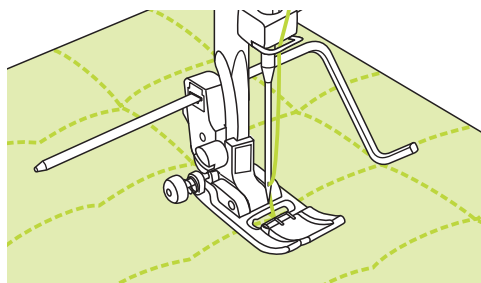


The inside of the snap-in sewing table is used as an accessory box.

Using the Edge & quilting guide



Insert the edge/quilting guide in the presser foot holder as illustrated and set the space as you desire.



Sew the first row and move over the fabric to sew successive rows with the guide riding along the previous row of stitching.

Using the twin needle



Note:

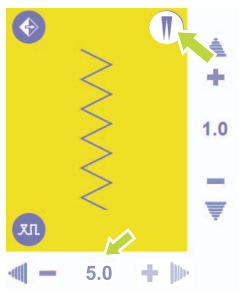
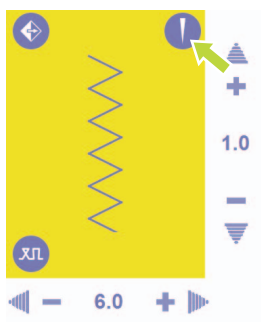
The twin needle is optional. It is not include with the accessories.



Attention:

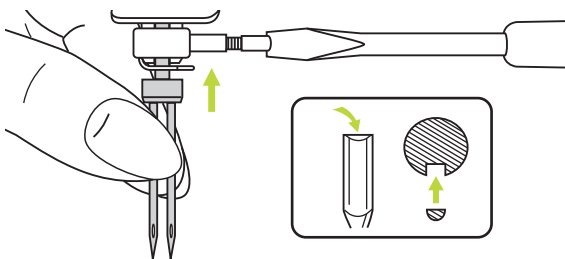
When using twin needles, use the all purpose foot (T) regardless of what kind of sewing foot will be carried out.

Use only twin needle assemblies with max. 2mm needle distance.

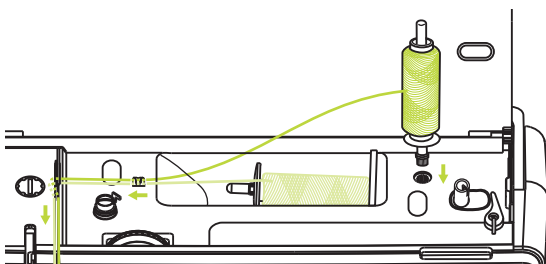


This icon will only appear when stitch patterns support using twin needle.

Press the button, the LCD screen will display the twin needle icon and the machine automatically reduces the maximum width for twin needle sewing by 2mm.

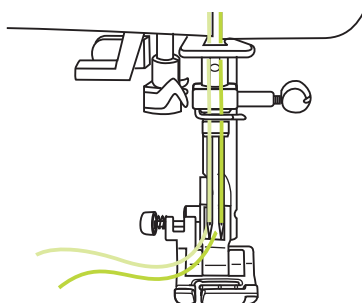


Insert the twin needle.



Follow the instructions for single-needle threading using the horizontal spool pin. Thread through the left needle.

Set the second spool pin into the hole on the top of the machine.

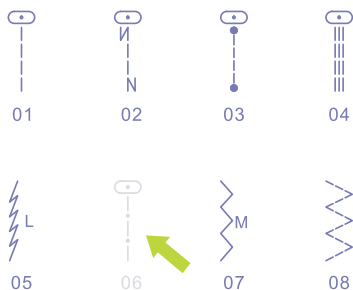


Thread through remaining points, making certain to omit the thread guide above the needle and pass thread through the right needle.

Thread each needle separately.



Two lines of stitching are sewn parallel to each other.



When twin needle function is set, stitch patterns that won't support this function will be displayed in gray color.

That the text mode, combo mode, memory mode and smart mode will not be available.

Note:

Make sure that the two threads used to thread the twin needle are of the same weight.

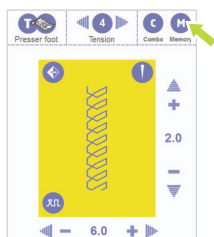
When sewing with twin needle, always proceed slowly, and make sure to maintain a low speed to insure quality stitching.

When twin needle function has been selected, it will remain active even the stitch pattern is changed. To deactivate this function, press the button again.

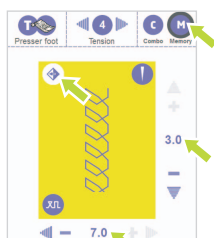
Memory function

The settings for the stitch width, stitch length, etc., are preset in the machine for each stitch. However, if you have specific settings that you wish to reuse later for a stitch, you can change the settings (stitch width, stitch length and mirror function) so that they can be saved for that stitch. In the memory function, thirty sets of settings can be saved for a single stitch pattern.

✂ Saving settings



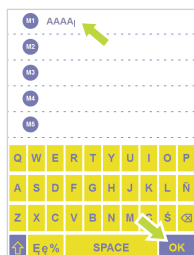
This icon will only appear when stitch patterns support using memory function.



Specify your preferred settings. (stitch width, stitch length and mirror function), then press the memory button.



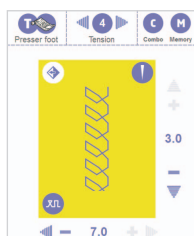
To select the number of the empty memory module. (For example: M1)



Input the file name, e.g. AAAA.

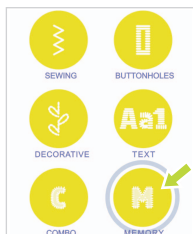
The name of each individual file should not exceed 13 characters.

Press the OK button, the settings are saved.

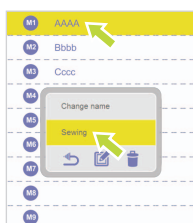


The original screen automatically appears.

✂ Recalling and sewing

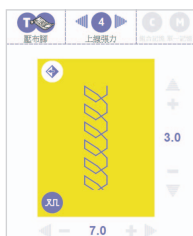


Into the export model, press the memory button to enter the memory mode.



To select the memory module that you want to sew, then the operation window will appear. (For example: M1)

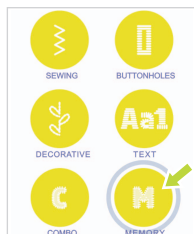
Press the sewing button.



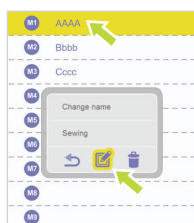
The memory of the stitch will appear.

Press the start/stop button or step on the foot controller to start the sewing.

Editing settings



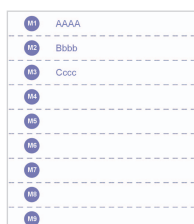
Into the export model, press the memory button to enter the memory mode.



To select the memory module that you want to edit settings, then the operation window will appear. (For example: M1)
Press the edit button.

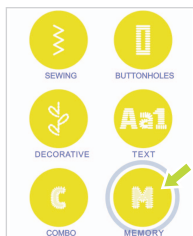


The edit window will appear.
The stitch length, stitch width and Mirror of the patterns can be adjusted. If the value is not adjustable, it will displayed in gray color.
Press the OK button, the settings are saved.

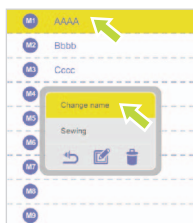


The original screen automatically appears.

✂ Change name of the memory module



Into the export model, press the memory button to enter the memory mode.



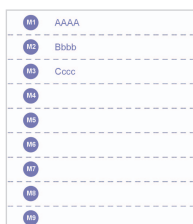
To select the memory module that you want to change name, then the operation window will appear. (For example: M1)

Press the change name button.



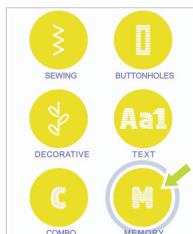
Input the new name, e.g. A01.

Press the OK button to saved.



The original screen automatically appears.

Deleting settings

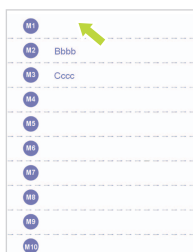


Into the export model, press the memory button to enter the memory mode.



To select the memory module that you want to edit settings, then the operation window will appear. (For example: M1)

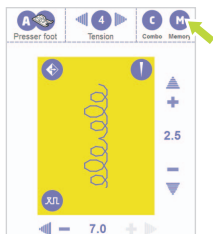
Press the delete button.



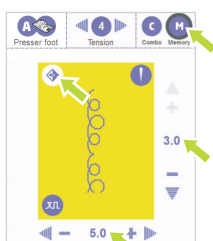
The setting will be delete.

The original screen automatically appears.

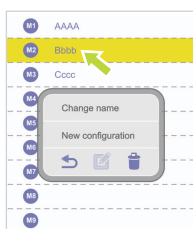
✂ Replacing settings



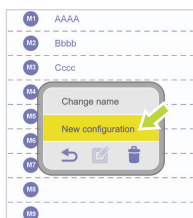
This icon will only appear when stitch patterns support using memory function.



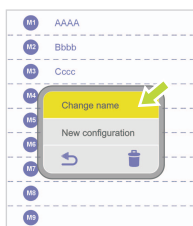
Specify your preferred settings. (stitch width, stitch length and mirror function), then press the memory button.



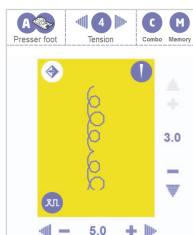
To select the number of the memory module that you want to replace, than the operation window will appear. (For example: M2)



If you press the change name button, after inputting the new name, the settings are also saved.



If you press the new configuration, the settings are saved and the original screen automatically appears.



The original screen automatically appears.

Combo function

Combined patterns can be stored for later use. Since stored patterns are not lost after the sewing machine is turned off, they can be recalled at any time. This is convenient for patterns, such as names, that will be used often.

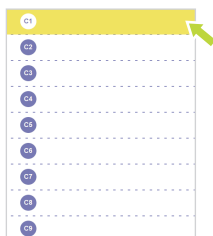
You can combine many varieties of stitch patterns, such as text stitches, cross stitches or satin stitches.

It has 30 modules of combo function and each module can retain 20 units of stitches patterns.

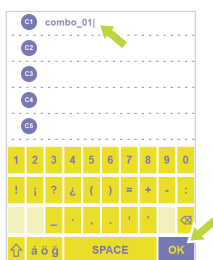
✂ Combining stitches or text



This icon will only appear when stitch patterns support using combo function.



To select the number of the empty combo module. (E.g. C1)



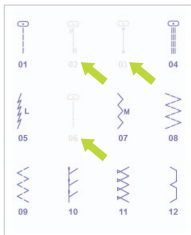
Input the name and press the OK Button. (E.g. Combo_01.)

The name of each individual file should not exceed 13 characters.



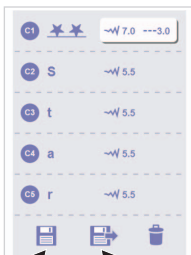
Then enter the combo review/edit mode.

Press the add button to enter pattern browser.



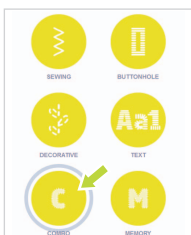
The stitch patterns that won't support this function will displayed in gray color.

Select the desired stitches or text, for example: stitch 70 and text Star.

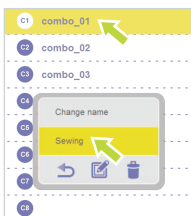


The stitches or text will be sequentially stored in the empty unit. Press the button (A) to save or press the button (b) to save and enter to combo sewing mode.

✂ Recalling and sewing



In to the expert model, press the combo button to enter the combo mode.



To select the combo module that you want to sew, the operation window will appear. (E.g. C1)

Press the enter sewing button.

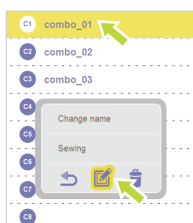


Then enter the combo sewing mode, the screen shows the stitch of the 1st combo position, on right bottom side appears current pattern / total pattern. Press the start/stop button or step on the foot controller to start the sewing.

✂ Editing settings

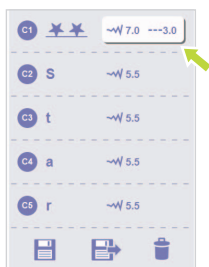


In to the expert model, press the combo button to enter the combo mode.



To select the combo module that you want to edit settings, the operation window will appear. (E.g. C1)

Press the edit button.



Then enter the combo review/edit mode, the stitch with the white mark is able to edit the parameter.

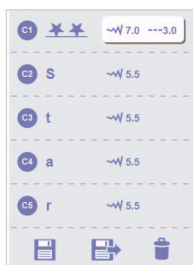
To select the stitch that you wish to edit.



The edit window will appear.

The stitch length, stitch width and Mirror of the patterns can be adjusted, If the value is not adjustable, it will displayed in gray color.

After editing, press the OK Button.



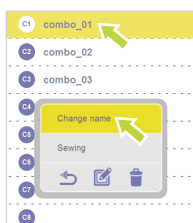
Then return to the combo review/edit mode.

Press the button (A) to save or press the button (b) to save and enter to combo sewing mode.

✂ Change name of the combo module

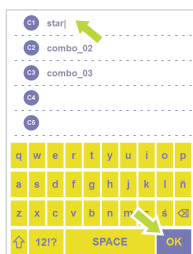


In to the expert model, press the combo button to enter the combo mode.



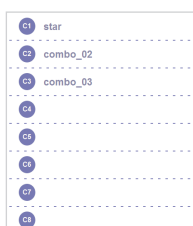
To select the combo module that you want to change name, the operation window will appear. (E.g. C1)

Press the change name button.



Input the new name, e.g. star.

Press the OK button to saved.



The original screen automatically appears.

✂ Deleting settings



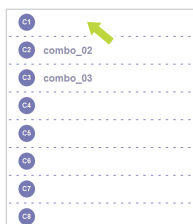
In to the expert model, press the combo button to enter the combo mode.



✂Delete the combo module

To select the combo module that you want to delete, the operation window will appear. (E.g. C1)

Press the delete button.



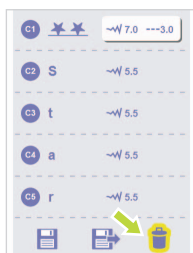
The combo module will be delete.



✂Delete the stitch

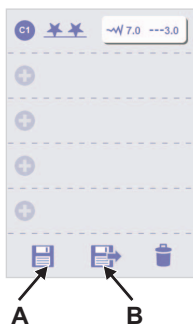
To select the combo module that you want to edit, the operation window will appear. (E.g. C1)

Press the edit button.



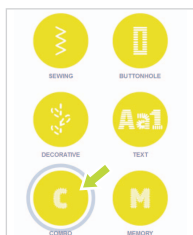
Then enter the combo review/edit mode.

Press the delete button will deleting from the last combo unit, each time delete one combo unit. E.g. press four times delete C5-C2 combo unit.



After deleting. Press the button (A) to save or press the button (b) to save and enter to combo sewing mode.

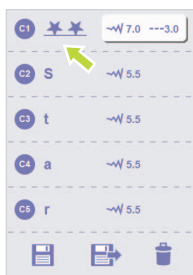
✂ Change the combo stitch



In to the expert model, press the combo button to enter the combo mode.

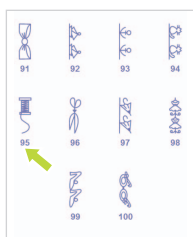


To select the combo module that you want to edit settings, the operation window will appear. (For example: C1)
Press the edit button.

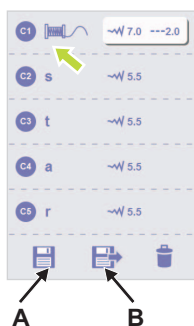
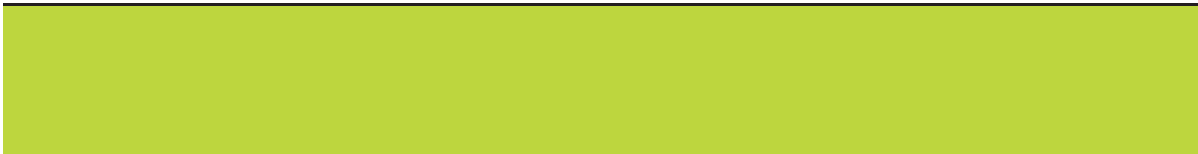


Then enter the combo review/edit mode.

To select the stitch that you want to replace, than pattern browser will appear. (E.g. C1)

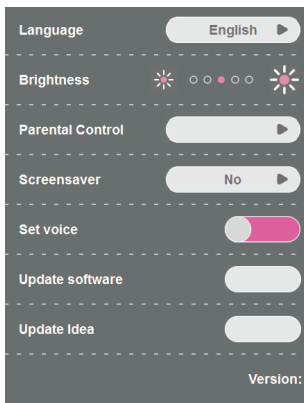


To select the desired stitch. (E.g. stitch 95)



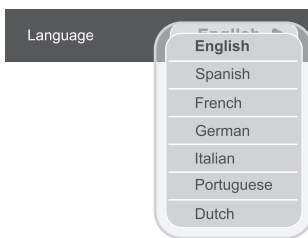
The stitch will be replaced and return to the combo review/edit mode.
Press the button (A) to save or press the button (B) to save and enter to
combo sewing mode.

Machine Settings



In the setup program, the machine settings can be customized or executed.

There are 8 functions in the program, the language, brightness, parental control, screen saver, voice, update and software version information.



Language

You can select one of 7 languages for the messages displayed on the screen.

Scroll through the languages by touching the arrow icons and select the language required.

This setting will be kept even you turn the machine off.



Brightness

You can adjust the brightness of the light by touching the round icon on the screen to the left/right.

LCD Brightness can be adjusted here in five different levels.

Default value is set at the center and you can touch the screen to adjust the brightness level.

This setting will be kept even you turn the machine off.

A dark grey rectangular button with the text "Parental control" on the left and a grey circle containing four red stars on the right.

Parental control

Parental Control

This function is to provide users to set up or modify their password to prevent their children from mis-operating this machine and cause damages.

- The machine in default setting is no password; you set up a password up to 4 digits.
- When the password is set, users will be asked to input the correct password while touching the screen in screen-saver mode. If users do not input or touch the screen within 10 seconds, it will be back to the screen-saver mode.
- Change the password, Touch the screen and enter the new password. Press the OK button to save it and exit the menu. the new password will be saved automatically.
- Forget the password, Press the Del button for 5 seconds. Buzzer will beep and reset the password to its default value.
- This setting will be kept even you turn the machine off.

A dark grey rectangular button with the text "Screensaver" on the left. To its right is a light grey rounded rectangle containing a list of options: "NO", "3 min", "5 min", "10 min", and "Execute".

Screensaver

Screensaver

You can select one of menu for screen saver time selection. The standby timer can be set, NO, 3minm 5min, 10min and Execute, touch "Execute" will immediate enter the screensaver.

The screen will show the screensaver when the machine is in standby status, During the screen-saver mode, touch the screen will back to its previous screen.

This setting will be kept even you turn the machine off.

A dark grey rectangular button with the text "Set voice" on the left and a grey toggle switch on the right.

Set voice

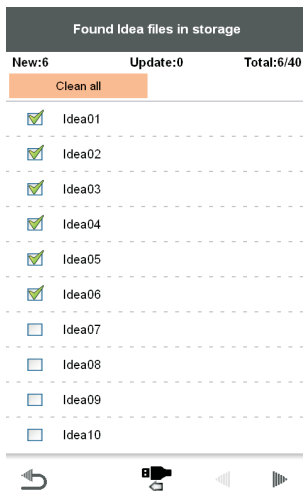
Set voice

The buzzer sound can be set on or off.



Update software

1. Insert the USB Disk (must have the appropriate model software)
2. Choose the USB upgrade button for launch.
3. System will be in processing automatically .
4. Remove USB disk is forbidden during the upgrade is launched. This may occur the system is out of function.
5. After upgrade is completed the machine will restart automatically, the USB disk is allow to remove.



Update Idea

1. Please insert the USB Disk then press this button to add a new Idea file
2. When press this button, the machine will be listed on own list of files for your choose.
3. You can check which you prefer to add (or update) the Idea files, click again will be deleted.
4. When you check a new file "New" status will increase, such as the file's status updates the "Update" is also increased.
5. "Total" is for the maximum allowable number of machines in the Idea files.
6. Select "Clean All" button to clear all items you are selected.
7. After pressing the OK button, the machine will be based on your check to add or update Idea File.
8. If press the Cancel button, the machine will return to the settings page and not executed idea update process.



Version

Software version information.

Cleaning the screen

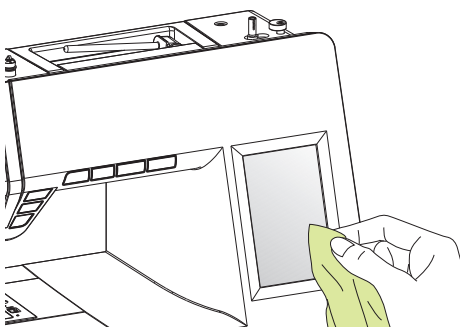


Attention:

Disconnect the power cord from the wall socket before cleaning the screen and sewing machine surface, otherwise injury or electrical shock may result.

If the front panel is dirty, wipe it gently with a soft, dry cloth.

Do not use any organic solvents or detergents.



Cleaning the sewing machine surface



Attention:

Disconnect the power cord from the wall socket before cleaning the screen and sewing machine surface, otherwise injury or electrical shock may result.

If the surface of the sewing machine is dirty, lightly soak a cloth in mild detergent, squeeze it out firmly and then wipe the surface. After cleaning it once in this way, wipe the surface again with a dry cloth.



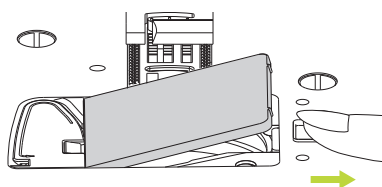
Cleaning the hook

If lint and bits of thread accumulate in the hook, this will interfere with the smooth operation of the machine. Check regularly and clean the stitching mechanism when necessary.

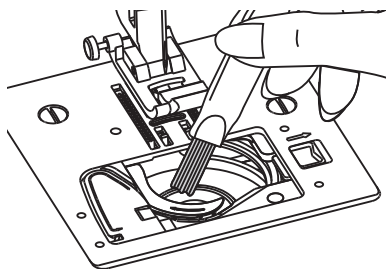


Attention:

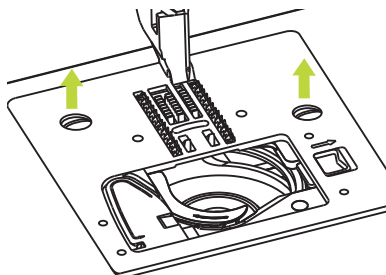
Disconnect the machine from the wall outlet before carrying out any maintenance.



Remove the bobbin cover plate and bobbin.

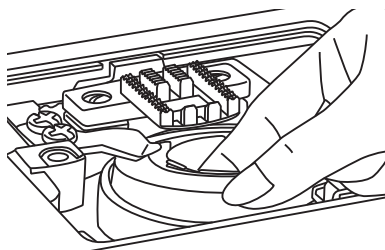


Clean the bobbin holder with a brush.

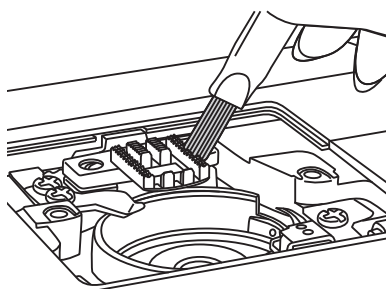


Remove the needle, presser foot and presser foot holder.

Remove the screw holding the needle plate and remove the needle plate.

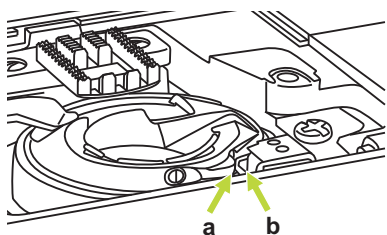


Lift up the bobbin case and remove it.



Clean the hook race, feed dog and bobbin case with a brush.

Also clean them, using a soft, dry cloth.



Replace the bobbin case into the hook race so that the tip (a) fits to the stopper (b) as shown.

Sewing Light

This appliance is equipped with a durable LED illumination, which is expected to last for the whole lifetime of the equipment.

Please contact a local service agent, should the lamp nevertheless require to be replaced.

Trouble shooting guide

Problem	Cause	Correction
Upper thread breaks	1. The machine is not threaded correctly.	1. Rethread the machine.
	2. The thread tension is too tight.	2. Reduce the thread tension (lower number).
	3. The thread is too thick for the needle.	3. Select a larger needle.
	4. The needle is not inserted correctly.	4. Remove and reinsert the needle (flat side towards the back).
	5. The thread is wound around the spool holder pin.	5. Remove the reel and wind thread onto reel.
	6. The needle is damaged.	6. Replace the needle.
Lower thread breaks	1. The bobbin case is not inserted correctly.	1. Remove and reinsert the bobbin case and pull on the thread. The thread should pull easily.
	2. The bobbin case is threaded wrong.	2. Check both bobbin and bobbin case.
	3. The lower thread tension is too tight.	3. Loosen lower thread tension as described.
Skipped stitches	1. The needle is not inserted correctly.	1. Remove and reinsert needle (flat side towards the back).
	2. The needle is damaged.	2. Insert a new needle.
	3. The wrong size needle has been used.	3. Choose a needle to suit the thread.
	4. The foot is not attached correctly.	4. Check and attach correctly.
	5. The machine is not threaded correctly.	5. Rethread the machine.
Needle breaks	1. The needle is damaged.	1. Insert a new needle.
	2. The needle is not correctly inserted.	2. Insert the needle correctly (flat side towards the back).
	3. Wrong needle size for the fabric.	3. Choose a needle to suit the thread and fabric.
	4. The wrong foot is attached.	4. Select the correct foot.
	5. The needle clamp screw is loose.	5. Use the screwdriver to firmly tighten the screw.
	6. The presser foot that is used is not appropriate for the type of stitch that you wish to sew.	6. Attach the presser foot that is appropriate for the type of stitch that you wish to sew.
	7. The upper thread tension is too tight.	7. Loosen the upper thread tension.
Loose stitches	1. The machine is not correctly threaded.	1. Check the threading.
	2. The bobbin case is not correctly	2. Thread the bobbin case as illustrated.
	3. Needle/ fabric/ thread combination is wrong.	3. The needle size must suit the fabric and thread.
	4. Thread tension is wrong.	4. Correct the thread tension.



Problem	Cause	Correction
Seam gather or pucker	1. The needle is too thick for the fabric.	1. Select a finer needle.
	2. The stitch length is adjusted wrong.	2. Readjust the stitch length.
	3. The thread tension is too tight.	3. Loosen the thread tension.
Seam puckering	1. The needle thread tension is too tight.	1. Loosen the thread tension.
	2. The needle thread is not threaded correctly.	2. Rethread the machine.
	3. The needle is too heavy for the fabric being sewn.	3. Choose a needle to suit the thread and fabric.
	4. The stitch length is too long for the fabric.	4. Make stitch dense.
	5. If you are sewing thin fabric.	5. Sew with stabiliser material under the fabric.
Patterns are distorted	1. The correct presser foot is not used.	1. Select the correct foot.
	2. The needle thread tension is too tight.	2. Loosen the thread tension .
The machine jams	1. Thread is caught in the hook.	Remove the upper thread and bobbin case, turn the handwheel backwards and forwards by hand and remove the thread remnants.
	2. The feed dogs are packed with lint.	
The machine is noisy	1. Fluff or oil have collected on the hook or needle bar.	1. Clean the hook and feed dog as described.
	2. The needle is damaged.	2. Replace the needle.
	3. Slight humming sound coming from internal motor.	3. Normal.
	4. Thread is caught in the hook.	Remove the upper thread and bobbin case, turn the handwheel backwards and forwards by hand and remove the thread remnants.
	5. The feed dogs are packed with lint.	
Uneven stitches, uneven feed	1. Poor quality thread.	1. Select a better quality thread.
	2. The bobbin case is threaded wrong.	2. Remove the bobbin case, the thread and reinsert correctly.
	3. Fabric has been pulled.	3. Do not pull on the fabric while sewing, let it be taken up by the machine.
The sewing machine doesn't operate	1. The machine is not turned on.	1. Turn on the machine.
	2. The presser foot lifter is raised.	2. Lower the presser foot lifter.
	3. The machine is not plugged in.	3. Connect the power line plug to the electric outlet.



Telephone: +34 943 820 300

Fax: +34 943 204 036

Email: info@alfahogar.com

www.alfahogar.com